

# YALE INSTITUTE FOR GLOBAL HEALTH



The Best of Yale for the World's Health



*Through collaborations across Yale, the Yale Institute for Global Health implements and facilitates programs and research around the globe.*



Yale Institute for Global Health



## The Yale Institute for Global Health [YIGH]

is the focal point for global health at Yale, bringing together expertise and knowledge from across campus with partners around the world. With a center of gravity close to the Yale Schools of Medicine, Nursing and Public Health, YIGH represents a university-wide mission. By actively collaborating across disciplines and seizing opportunities for innovation, YIGH was established to speed the translation of new scientific discoveries into better health for all.

**“YIGH is at the intersection of intellectual rigor, experience, and creativity where collaboration with partners around the world inspires ideas and solutions to our world’s health challenges,”** says Dr. Saad Omer, director, Yale Institute for Global Health. *“Innovation comes from any - and everywhere, making YIGH one of the most impactful scientific exchanges particularly with colleagues in low and middle-income countries.”*



### ▶ STRENGTH IN COLLABORATION

YIGH supports collaborative research and scholarship for global health among faculty, students, and other trainees through its [Faculty Support Initiative \(FSI\)](#). FSI includes programs, activities, and resources to support faculty members' global health work. Through tailored funding resources and other learning opportunities, these efforts facilitate the creation of new projects and collaborations with partners around the world. Housed within FSI, the [YIGH Faculty Network](#) program convenes and nurtures groups of faculty to forge new, interdisciplinary collaborations to tackle some of the most intractable issues in global health. Currently the Faculty Network portfolio includes Networks with a focus on addiction; planetary health; ethics; emergency, critical care, and disaster medicine; surgery; non-communicable diseases; malaria; and biological embedding of adversity.



### ▶ INVESTING IN GLOBAL HEALTH

YIGH offers a variety of funding opportunities for faculty to launch collaborations and innovative solutions for pressing global health challenges. The [Hecht Global Health Faculty Network Award](#) and the [Global Health Spark Award](#) nurture novel ideas that will lead to larger funding and partnership opportunities that will have a significant impact on a variety of salient global health issues including HIV/AIDS, mental health, and others.





## ▶ CULTIVATING FUTURE LEADERS

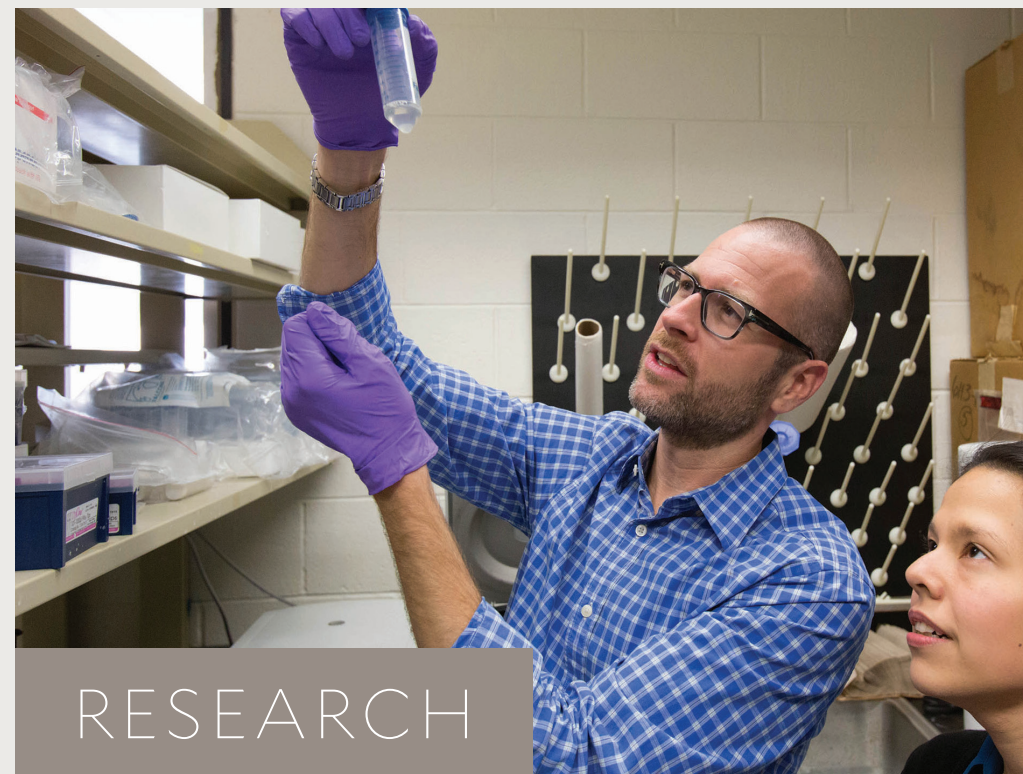
YIGH contributes to the development of future leadership in global health by training aspiring professionals who understand the critical importance of good health for a just and equitable society. Through the [Leadership in Global Health Fellowship](#), students and trainees can participate in a comprehensive program that includes participation in an advanced leadership seminar and placement in a high-impact internship with major organizations working in global health.

The [Global Health Ethics Program](#) offers students and trainees workshops and other activities to manage the ethical challenges that often arise in the clinical setting and global health research. The program has also developed new areas of scholarly work on the experience and impact of the program with the larger global health community.

The [YIGH Case Competition](#) is designed for students across Yale to collaborate and develop innovative solutions to pressing global health challenges. Participants have an opportunity to apply their creativity, critical thinking skills, and technical expertise to address a pressing issue in global health.

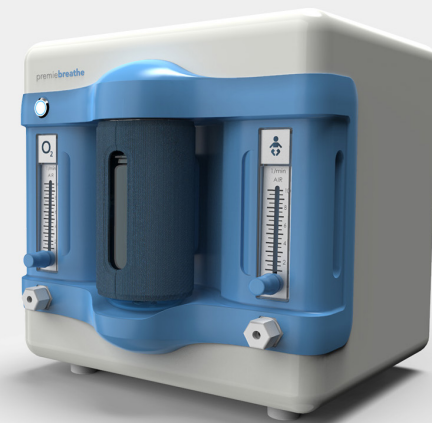
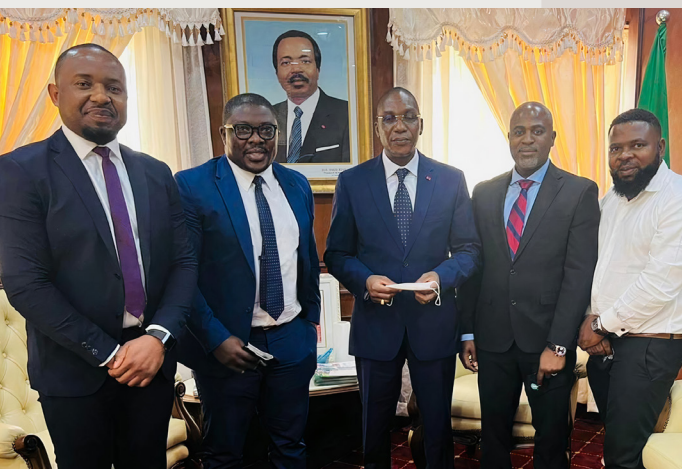
## ▶ TAKING ON TODAY'S CHALLENGES

YIGH is engaged in a variety of collaborations related to COVID-19, including ascertaining the human interaction that leads to infection, using wastewater to predict community outbreaks, identifying immune response associated with severe disease, and developing interventions to increase COVID-19 vaccine acceptance. These efforts will have a significant impact on our response to COVID-19 and future pandemics.



## YIGH investments catalyze new research and programs in global health

A \$15 million program funded by the United States Agency for International Development to support a partnership between Yale, the University of Liberia College of Health Sciences, and Vanderbilt University. Focused on using research in health sciences education and practice, the partnership will launch a new Center for Teaching, Learning and Innovation and establish sustainable educational programs and systems at the University of Liberia College of Health Sciences, ultimately helping to strengthen Liberia's health sector.



## ▶ GLOBAL HEALTH ENTREPRENEURSHIP

Recognizing that entrepreneurship is vital to groundbreaking solutions, The [Sustainable Health Initiative \(SHI\)](#) is the home for global health entrepreneurship at Yale. The growth of startups through SHI that have created innovative solutions to address crucial health care challenges which include:

- Finding affordable medication and delivery options and an app to search organ donor databases to help find a match in rapid time (UrPharm);
- Respiratory needs of premature babies in Rwanda currently in small batch production for larger distribution (Aero Therapeutics);
- A care continuity system to the make the organ transplant process move more efficiently to match donors, and assist with follow-up (Metamagics).







CHANGE

▶ PROVIDING PLATFORMS FOR DISCUSSION AND CHANGE

The [YIGH Global Health Conversation Series](#) is a platform for some of today's pivotal decision makers in global health to share their knowledge and expertise with the Yale community and audiences around the world. YIGH has been pleased to host Dr. Anthony Fauci, Director, National Institute of Allergy and Infectious Diseases, Dr. Tedros Adhanom Ghebreyesus, Director-General of the World Health Organization, as well as former directors of the Center for Disease Control and Prevention among our guests. Representing diverse backgrounds, speakers address the most cutting edge issues in global health.



DIALOGUE

1. **David Miliband**  
*President and CEO, International Rescue Committee, Former Secretary of State for Foreign Affairs of the U.K.*
2. **Elizabeth Bradley**  
*President and Global Health Scholar, Vassar College*
3. **Dr. Bernice Dahn**  
*Vice President, Health Sciences, University of Liberia*
4. **Henrietta Fore**  
*Former Executive Director, UNICEF*

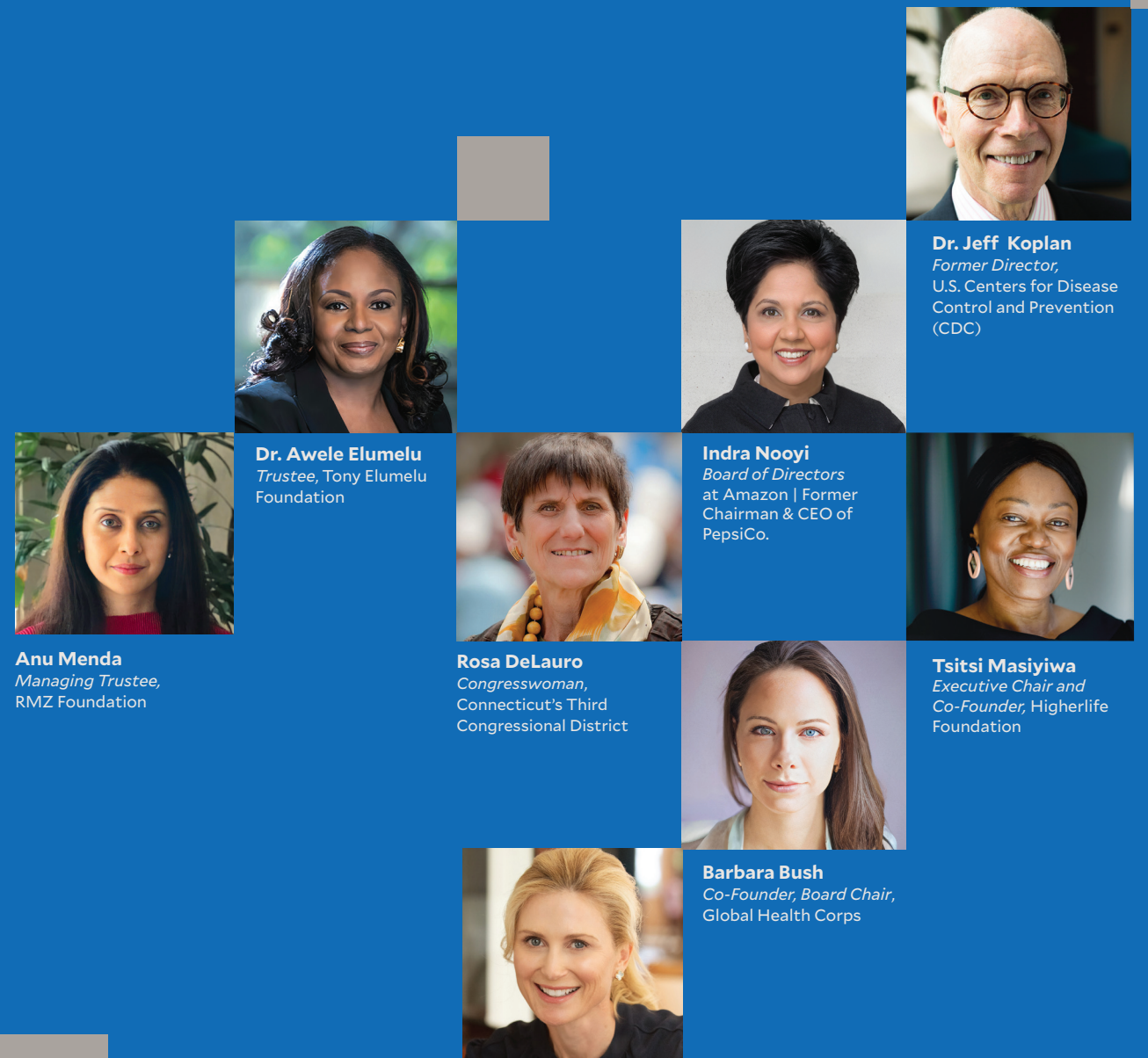
5. **Dr. Anthony Fauci**  
*Director, National Institute of Allergy and Infectious Diseases*
6. **Dr. Angeli Achrekar**  
*Acting U.S. Global AIDS Coordinator, President's Emergency Plan for AIDS Relief*
7. **Dr. Tedros Adhanom Ghebreyesus**  
*Director-General, World Health Organization*
8. **Chris Murphy**  
*United States Senator, Health and Foreign Relations Committees*

9. **Dr. Julie Gerberding**  
*Chief Patient Officer and Executive Vice President, Population Health and Sustainability, Merck; CDC Director from 2002 - 2009*
10. **Dr. Tom Frieden**  
*President and CEO, Resolve to Save Lives; CDC Director from 2009 - 2017*
11. **Dr. Bill Foege**  
*Former Chief, Smallpox Eradication Program and CDC Director*

▶ ADVISORY BOARD

The [YIGH Advisory Board](#) represents diverse areas of expertise from business to government and health care policy. Board members provide strategic advice and support developing strong new relationships and partnerships to enhance the Institute's impact on the health of communities around the world.

"This outstanding group of experts is a tremendous resource for YIGH," said Yale President Peter Salovey. "During this period of uncertainty, their expertise and experiences are especially needed in helping YIGH make breakthroughs and create solutions to address complex global health challenges."



**Anu Menda**  
*Managing Trustee, RMZ Foundation*

**Dr. Awele Elumelu**  
*Trustee, Tony Elumelu Foundation*

**Rosa DeLauro**  
*Congresswoman, Connecticut's Third Congressional District*

**Indra Nooyi**  
*Board of Directors at Amazon | Former Chairman & CEO of PepsiCo.*

**Barbara Bush**  
*Co-Founder, Board Chair, Global Health Corps*

**Julie Frist**  
*Director, Liberty Broadband Corporation*

**Tsitsi Masiyiwa**  
*Executive Chair and Co-Founder, HigherLife Foundation*

**Dr. Jeff Koplan**  
*Former Director, U.S. Centers for Disease Control and Prevention (CDC)*





# Yale *Institute for Global Health*

## **CONTACT**

Michael Skonieczny

[michael.skonieczny@yale.edu](mailto:michael.skonieczny@yale.edu)

 Twitter: [@YaleGH](https://twitter.com/YaleGH)

 Facebook: [Global Health at Yale](https://www.facebook.com/GlobalHealthatYale)