

**YALE PATHOLOGY LABS  
2025 CALENDAR**

# Letter from the Chair



**The mission of Yale Pathology** continues to revolve around innovation, collaboration, and outstanding patient care. With robust research, teaching programs, and exceptional clinical patient care, we diligently pursue our goal of bringing new knowledge and innovative diagnostic and therapeutic approaches to medicine.

Our clinical practice thrived in 2024 with the support of our reference services team. Our Yale Pathology Labs (YPL) Outreach Team is working with David Rimm, MD, PhD, on marketing Troplex™, a quantitative assay developed at Yale that measures with increased accuracy the amount of HER2 protein in patients with breast cancer. This new assay, which provides quantitative data and allows for increased accuracy in treatment planning, was introduced in the Fall of 2024 and is already having an impact.

In other developments:

- The Yale Developmental Histology Laboratory was recognized for its contributions to a program that seeks to measure the impact of the HPV vaccine on population health. The Developmental Histology Lab processed over 580 samples for the HPV-IMPACT study in one year.
- YPL Reference Services promoted our services making “house calls,” visiting appropriate specialists across Connecticut. These services include the GTD Program (molar pregnancy), Renal, Ophthalmology, Oral and Maxillofacial pathology, HS HER-2, and our FNA program.
- YPL continued to strengthen relationships with our community partners, including a holiday toy drive with Fair Haven Community Health that provided new blankets and infant items, as well as through our participation in a Lung Cancer Awareness Event at the Dixwell Community House.

In addition to well-established Molecular Diagnostics and Tumor Genotyping evaluations, which use next generation sequencing (NGS)-based assays to guide therapeutic decisions in many solid tumors, YPL also has a NGS panel for the targeted evaluation of borderline thyroid lesions (ThyroSureNGS®). This test complements our cytologic evaluation of fine needle aspirates (FNA) and allows physicians to more decisively select the correct therapy for patients with thyroid neoplasms. Our gynecologic pathology team offers expert molecular genotyping test for molar gestations.

We continue to provide FDA-approved PDL-1 testing, a key diagnostic for personalizing immunotherapy for patients diagnosed with cancer, and expand this capability as it is applied to a wider variety of tumors. We have also expanded our evaluation methodologies for the detection of microsatellite instability (MSI) to tumors found beyond the gastrointestinal tract. This testing often allows physicians to select more effective

therapies for their patients. And along with Yale Medicine and Yale New Haven Health, we are refining the reporting options for pathology and laboratory results within Epic®. Clients using Epic® can receive their pathology reports through Epic® as well as through RELAY, our own web-based reporting tool.

These advances and a robust focus on quality and patient safety carry on our long Yale tradition of introducing leading technologies and scientific discoveries to benefit patient care. Yale Pathology has many “firsts” to its credit. Our pathologists continue to thrive at the intersection of basic science and clinical care and are making exciting discoveries in cancer biology, epigenetics, computational pathology, digital pathology, and the biology/pathology of aging.

In November, we held our 2nd Annual Pathology Day in partnership with Yale Pathways to Science. Public school students were invited to spend the day exploring different rotations, including autopsy and cytology, and learning to take samples, how blood smears are made, and how cancer cells grow in the laboratory. The annual event exposes students to careers in pathology and shows the variety of positions in pathology.

In addition, we launched the Yale Pathology Histotechnician Trainee Program. We are proud to have our first trainee learning under the guidance of histology leadership. Following training and completion of the state exam, she will be a nationally certified histotechnician.

Over the last year, Yale Pathology welcomed new faculty members, and applauded the accomplishments of our scientists and physicians, many of whom presented nationally and internationally and were recognized among Connecticut’s Top Doctors, while others played a pivotal role in revitalizing the Connecticut Society of Pathologists.

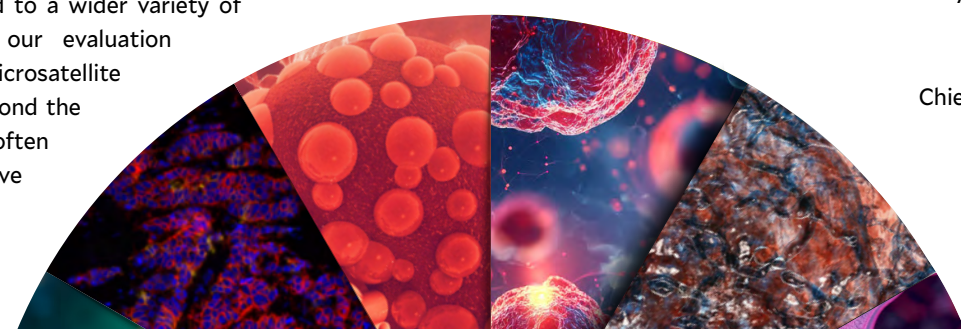
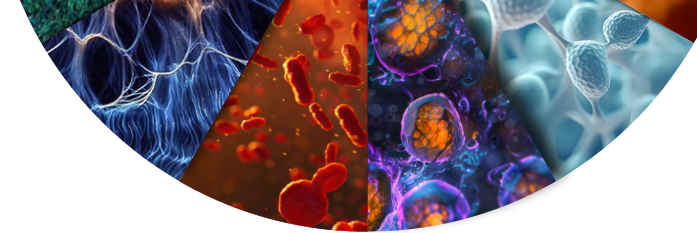
The importance of the work done at Yale Pathology cannot be overstated. Our consultative practices are available to all regardless of location through our robust expert consultation and reference programs, which are specifically designed to serve physicians and their offices. Details of how to access the services of Yale Pathology Labs are presented herein.

Sincerely,

**Chen Liu, MD, PhD**

Anthony N. Brady Professor of Pathology  
Chair, Department of Pathology  
Yale School of Medicine  
Chief of Pathology, Yale New Haven Hospital

**Yale SCHOOL OF MEDICINE**  
*Department of Pathology*



# Reference Services



**Yale Pathology Labs** understand that test results are integral to the daily routine of your practice. From diagnosing patients to selecting treatments, your lab service affects every patient. When you choose Yale Pathology Labs as your service provider, you choose the latest technology, outstanding customer service, and a team of premier pathologists.

Reference customer service representatives are available between 8 am and 5 pm EST, Monday through Friday. Our knowledgeable and efficient staff is ready to assist with questions about ordering, billing, shipping, and reports. Our service team will thoroughly address your needs, concerns, or questions and can be reached at **877-YALE LAB (877-925-3522)** and by email at [yalepathologylabs@yale.edu](mailto:yalepathologylabs@yale.edu).

## FINAL REPORTS

For most locations, patient final reports are delivered to your practice by our courier, Lab Logistics. Patient reports are also available for physicians to access immediately via the Yale New Haven Health System **Epic®** interface or through our secure web-based software solution, **RELAY** (Remote Electronic Labs at Yale). For information about access to **RELAY**, please contact our customer service team.

## FOLLOW-UP SERVICES AVAILABLE FROM OUR CYTOLOGY LABORATORY

- **Annual patient reminder letters**
- **6-month no follow-up reminders**
- **Normal Pap result letters**
- **Monthly reports customized to the needs of your practice**

## PARTICIPATION IN MANAGED CARE PLANS

Yale Pathology Labs accept most health insurance plans. For a complete list of managed care health plans in which we participate, please visit Yale Medicine's website at [yalemedicine.org/patient-tools/insurance](http://yalemedicine.org/patient-tools/insurance).

## BILLING

Yale Pathology Labs will bill the insurance company or financially responsible party directly, per the requisition form that accompanies each specimen submitted to our lab. Please note that patients are responsible for any co-payments, deductibles, or co-insurance under their plan.

## TRANSPORT FOR SPECIMENS

In our primary service area, Lab Logistics is our dedicated courier service for all routine or STAT laboratory specimen pick-ups. Lab Logistics also handles supply orders and deliveries. Please contact them directly for a specimen pick-up and for supplies, at:

**Tel: 833-215-7628 Fax: 888-370-5356**

If you are outside of our courier service area, whether in-state, nationally, or globally, your practice can submit specimens through our pre-paid FedEx service. Contact customer service for more information.

# Consultation Services



## EXPERT CONSULTATION PRACTICE

Yale Pathology Labs strive to provide both prompt and timely diagnoses and specialized studies applicable to specific diseases through our new Expert Consultation Practice. The expertise of our pathology subspecialists and the diversity of surgical specimens submitted for evaluation also provide an excellent environment for research and training. Consultations and requests for second opinions are welcome.

Patients or physicians seeking to have pathology slides sent to Yale Pathology for an upcoming appointment or for a second opinion should send slides along with the final report to:

Yale Surgical Pathology  
Medical School Receiving  
200 South Frontage Road  
YNHH EP2-631  
New Haven, CT 06520

Please contact our service team at **877-YALE LAB (877-925-3522)** for detailed information about how to send specimens and other material necessary for consultation on an individual patient's case.

## QUALITY ASSURANCE INITIATIVE

Yale Pathology Labs provide quality patient care in an effective, efficient, and timely manner. We maintain extensive quality assurance and improvement programs consisting of a formal, multifaceted, and systematic approach for measuring and enhancing patient safety and improving the nature of patient care. In addition to satisfying all accreditation and licensing requirements, our quality assurance programs go well beyond the minimum as a leader in quality improvement (QI) and quality monitoring methodologies.

# Yale Pathology Labs



**Angelique W. Levi, MD**  
*Vice Chair, Clinical Operations  
& Reference Services*  
angelique.levi@yale.edu



**Kevin Schofield, BS, CT(ASCP)**  
*Director, Reference Services  
Clinical Operations*  
kevin.schofield@yale.edu



**Stephanie Weirsman**  
*Director, Reference Services  
Business Development*  
stephanie.weirsman@yale.edu

---

SERVING ALL CONNECTICUT COUNTIES

---

## BRIDGEPORT / MILFORD FACULTY

**Paul Jay Cohen, MD**  
*Associate Professor of Clinical Pathology  
Director, Surgical Pathology, Bridgeport Hospital Pathology*

**Christine Minerowicz, MD**  
*Assistant Professor of Pathology, Chair, Bridgeport  
Hospital Pathology  
CLIA Medical Director – Bridgeport & Milford Hospital  
Laboratories*

**Sumi Thomas, MBBS**  
*Assistant Professor of Pathology  
Site Director, Yale Pathology Residency Program at  
Bridgeport Hospital*

**Mingfu Yu, MD, MS**  
*Assistant Professor of Pathology*

**Tong Sun, MD, PhD**  
*Assistant Professor of Pathology*

**Yuanxin Liang, MD, PhD**  
*Assistant Professor of Pathology*

**Haiying Zhan, MD, PhD**  
*Assistant Professor of Pathology*

**Edward Snyder, MD**  
*Professor of Laboratory Medicine  
Director, Transfusion Medicine - Bridgeport & Milford  
Hospital Laboratories*

**Nalan Yurtsever, MD**  
*Assistant Professor of Laboratory Medicine  
Director, Laboratory Medicine - Bridgeport & Milford  
Hospital Laboratories*

---

## SAINT RAPHAEL CAMPUS FACULTY

**Mingfu Yu, MD, MS**  
*Assistant Professor of Pathology*

# QDAP CAP/CLIA Laboratory

**The Yale QDAP (Quantitative Diagnostics in Anatomic Pathology) Laboratory** is a CAP/CLIA-certified laboratory that represents next generation immunohistochemistry.

Pathology has long provided quantitative data in Laboratory Medicine or Clinical Pathology labs where Hematology and Chemistry values are provided to clinicians in mg/dl or similar quantitative values expressed as a concentration with a standardized value and range. However, Anatomic Pathology has historically provided only subjective readings due to the technical challenges of measuring protein concentrations within tissue sections.

Modern technology and computational power have allowed for fully quantitative, standardized measurement of biomarker expression in tissue expressed in attomole/mm<sup>2</sup>

The QDAP laboratory now offers a High Sensitivity (HS) HER2 assay validated for HER2 expression in breast cancer and the Tropex™ assay for quantitative HER2 and TROP2 on the same tissue sample. Assays for PD-L1, HER3 and CD8 are expected to be validated in the near future.

## OUR TEAM

**David Rimm, MD, PhD**, Director, QDAP  
**Nay Nwe Nyein Chan, PhD**, Technical Director  
**Julia Benanto**, Technical Assistant

# Yale Autopsy Service

The Yale Autopsy Service performs autopsies seven days a week for the York Street Campus, Saint Raphael Campus, Bridgeport Hospital, and the West Haven VA Hospital. Autopsies on patients from the Yale system are usually performed at no cost to the family. The autopsy service is involved in the Pathology Department's educational, quality assurance, and teaching missions, and we collaborate with researchers through the Yale Legacy Tissue Donation Program and multiple tissue banks. We also provide morgue services for all patients who pass away at Yale New Haven Hospital. The morgue is responsible for processing paperwork for all deceased patients including death certificates and autopsy consents.

## OUR TEAM

**Harry Sanchez, MD**, Director  
**Raffaella Morotti, MD**, Associate Director  
**Amanda Masters, MHS, PA (ASCP)**, Autopsy and Morgue Manager

# Molecular Diagnostic Pathology



Advances in molecular and cell biology have provided us with a profound understanding of the mechanisms of various diseases at the molecular and genetic levels. Such understanding has been successfully translated into clinical diagnostic, prognostic, and therapeutic applications in modern medicine. Molecular genetic alterations not only provide a signature for the presence of a specific disease but may also provide essential biomarkers for therapeutic targeting the specific abnormal gene products. In recent decades, the role of diagnostic pathology has expanded from mere morphologic evaluation into comprehensive multifaceted analysis through combined histological, immunohistochemical and molecular evaluations. Yale Pathology's program in Molecular Diagnostics is constantly translating new discoveries and novel technologies into relevant clinical tests that provide either molecular fingerprint of the diseases or precise prediction for the response to targeted therapies. Yale Pathology molecular diagnostics laboratory performs a wide range of molecular tests on routine pathology specimens, including hotspot mutation analyses, microsatellite instability testing, STR genotyping and various fluorescent in-situ hybridization (FISH) testing for detection of chromosomal rearrangements and gene amplifications in various cancers. In recent years, our molecular pathologists direct state-of-the-art platforms of comprehensive next-generation sequencing analysis of solid tumors and provide clinically relevant interpretations to assist the critical oncological care of patients at Smilow Cancer Hospital.

Clinical Tests Provided by Molecular Diagnostics Lab

### Diagnostic PCR Tests

BRAF mutation  
FOXL2 mutation  
KRAS mutation  
T and B cell rearrangement  
STR DNA genotyping (gestational trophoblastic disease and tissue identity testing)  
MLH1 promoter methylation  
MSI analysis  
Mycobacterium Tuberculosis

### PCR Based Companion Diagnostic Tests

BRAF mutation  
KRAS mutation  
KIT(c-kit) mutation  
MGMT promoter methylation



**Left:** The new mobile Laboratory-in-a-Van that Yale Pathology Labs uses to bring our testing services to underserved Connecticut communities.

**Below:** Members of the YPL Reference Services team at a community event in West Haven.



### Diagnostic FISH tests

BCL1 rearrangement (lymphomas)  
BCL2 rearrangement (lymphomas)  
BCL6 rearrangement (lymphomas)  
EWS rearrangement (soft tissue tumors)  
SYT rearrangement (synovial sarcoma)  
TFE3 rearrangement of renal tumors  
UroVysion (urothelial carcinoma)  
MYC rearrangement (lymphomas)  
MDM2 amplification (liposarcomas)  
Chromosome 1p/191 deletion (oligodendroglioma)  
CDNK2A (mesothelioma)

### FISH Companion Diagnostic Tests

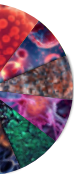
EGFR gene amplification  
HER2 amplification  
MET amplification

### Next-generation Sequencing Tests

Yale ThyroSure NGS Analysis (thyroid FNA specimen)  
ArcherDx Fusion Gene Panel (various solid tumors and lymphomas)

## OUR TEAM

**Pei Hui, MD, PhD**, Director  
**Sanja Dacic, MD, PhD**  
**Mohamed Kahila, MBCh**  
**Krasimira A. Rozenova, MD, PhD**



# Clinical Faculty



**Rita Abi Raad, MD**, Associate Professor of Pathology; Associate Residency Program Director, Pathology. Clinical interests: cytopathology, gynecologic pathology.



**Paul Jay Cohen, MD**, Associate Professor of Clinical Pathology; Chair, Bridgeport Hospital Pathology; Site Director, Yale Pathology Residency Program at Bridgeport Hospital. Clinical interests: general surgical pathology, thoracic pathology, gynecologic pathology.



**Anjela Galan, MD**, Associate Professor of Dermatology and Pathology; Associate Director, Dermatopathology Fellowship. Clinical interests: melanocytic skin neoplasms, soft tissue tumors, general neoplastic and non-neoplastic dermatopathology.



**Dhanpat Jain, MD**, Professor of Pathology and of Medicine (Digestive Diseases). Clinical interests: gastrointestinal and liver pathology, including liver tumors, gastrointestinal stromal tumors, prostate cancer risk and mortality, motility disorders of the bowel.



**Adebowale Adeniran, MD**, Professor of Pathology; Director of Cytopathology; Director, Cytology Laboratory; Director, Cytopathology Fellowship Program, Pathology; Director, Anatomic Pathology Elective Program, Pathology. Clinical interests: oncologic pathology, urologic pathology, cytopathology.



**Lorraine Colón-Cartagena, MD**, Assistant Professor of Pathology. Clinical interests: oncologic and breast pathology, breast cancer genomics.



**Peter Gershkovich, MD, MHA**, Associate Professor of Clinical Pathology; Director, Section of Pathology Informatics and Cancer Data Science, Pathology. Clinical interests: clinical systems engineering, information visualization, DNA sequencing analysis, NLP full-text search of clinical data.



**Mohamed Kahila, MBBCh**, Assistant Professor of Pathology. Clinical interests: breast pathology, molecular genetics pathology.



**Rebecca Baldassarri, MD**, Assistant Professor of Pathology. Clinical interests: cytopathology, gynecologic pathology.



**Shawn E. Cowper, MD**, Professor of Dermatology. Clinical interests: nephrogenic systemic fibrosis, alopecia, informatics.



**Joanna Gibson, MD, PhD**, Associate Professor of Clinical Pathology; Director, Quality and Patient Safety, Pathology. Clinical interests: colorectal polyposis and carcinogenesis, inflammatory bowel disease, Barrett esophagus, liver disease and transplantation, gastrointestinal neuroendocrine tumors, tumor molecular profiling.



**Samuel Katz, MD, PhD**, Associate Professor of Pathology. Clinical interest: hematopathology.



**Andrea Barbieri, MD**, Associate Professor of Pathology; Residency Program Director, Pathology. Clinical interests: gastrointestinal pathology, endocrine head and neck pathology.



**Sanja Dacic, MD, PhD**, Professor of Pathology; Vice Chair and Director of Anatomic Pathology. Clinical interests: thoracic pathology, molecular pathology.



**Earl J. Glusac, MD**, Professor of Pathology and of Dermatology; Director, Physician Associate Studies. Clinical interest: melanocytic tumors.



**Christine J. Ko, MD**, Professor of Dermatology and Pathology. Clinical interests: cutaneous and adnexal neoplasms.



**Marcus W. Bosenberg, MD, PhD**, Anthony N. Brady Professor of Dermatology, Pathology and Immunobiology; Director, Yale SPORE in Skin Cancer; Director, Yale Center for Immuno-Oncology; Co-Leader, Cancer Immunology, Yale Cancer Center. Clinical interests: melanocytic neoplasms, soft tissue tumors, cutaneous lymphoma.



**Marcello DiStasio, MD, PhD**, Assistant Professor of Pathology; Co-Director, Yale Legacy Tissue Donation Program, Pathology. Clinical interests: neurodegenerative, neuropsychiatric and retinal disorders.



**Pallavi Gopal, MD, PhD**, Associate Professor of Pathology. Director, Neuropathology and Human Brain Discovery, Pathology; Director, Neuropathology Fellowship, Pathology. Clinical interests: neuropathology, neurodegenerative disease.



**Uma Krishnamurti, MD, MBBS, PhD**, Professor of Pathology and Director of Breast Pathology; Director of Breast Pathology, Pathology. Clinical interests: breast pathology, cytopathology, gynecologic pathology.



**Demetrios T. Braddock, MD, PhD**, Associate Professor of Pathology. Clinical interests: urologic pathology, hematopathology, disorders of bone metabolism.



**Darin Dolezal, MD/PhD**, Instructor of Pathology; Yale Pathology Physician-Scientist Training Program; Yale Cancer Center K12 Calabresi Immuno-Oncology Training Program. Clinical interests: cytopathology, metastasis biology, liquid biopsy development.



**Robert Homer, MD, PhD**, Professor of Pathology and of Medicine (Pulmonary); Director of Medical Studies, Anatomic Pathology. Clinical interests: thoracic pathology, immunopathology.



**Deepika Kumar, MD**, Assistant Professor of Pathology. Clinical interests: hematopathology, genitourinary pathology, renal pathology.



**Natalia Buza, MD**, Professor of Pathology; Director, Pathology Center of Excellence for Women's Health, Anatomic Pathology; Director, Gynecologic Pathology Fellowship Program, Anatomic Pathology. Clinical interest: gynecologic pathology.



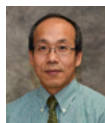
**Jeffrey Eskendri, DMD**, Assistant Professor Adjunct in Pathology. Clinical interests: oral and maxillofacial pathology.



**Won Jae Huh, MD, PhD**, Assistant Professor of Pathology. Clinical interests: preneoplastic lesions in the stomach and liver.



**Alexander Ladenheim, MD**, Assistant Professor of Pathology. Clinical interests: thyroid pathology, salivary gland pathology, and head & neck pathology.



**Guoping Cai, MD, MS**, Professor of Pathology; Associate Director of Cytopathology, Pathology. Clinical interests: fine needle aspiration (FNA), cytopathology, urologic pathology, thoracic pathology.



**Karin Finberg, MD, PhD**, Associate Professor of Pathology; Associate Director, Molecular Genetic Pathology Fellowship Program; Clinical interests: molecular diagnosis of inherited and acquired clinical disorders, disorders of iron metabolism."



**Pei Hui, MD, PhD**, Professor of Pathology and of Obstetrics, Gynecology and Reproductive Sciences; Director, Gynecologic Pathology; Clinical Director, Molecular Diagnostics Laboratories; Director, Pathology. Clinical interests: gynecologic pathology, general surgical pathology, molecular diagnostics.



**Gabriel Lerner, MD, MS**, Instructor of Pathology. Clinical interest: renal pathology.



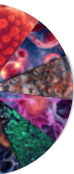
**Jocelyn Chandler, MD**, Assistant Professor of Pathology. Clinical interests: cytopathology, hematopathology.



**Anita Huttner, MD**, Associate Professor of Pathology. Clinical interests: neuropathology, molecular genetic pathology.



**Angelique W. Levi, MD**, Associate Professor of Pathology; Vice Chair of Operations and Director of Pathology Reference Services, Pathology; CLIA Laboratory Medical Director, Pathology; Affiliated Faculty, Yale Institute for Global Health. Clinical interests: Public health, COVID testing, gynecologic cytopathology, HPV-associated uterine cervical disease, urologic pathology, MRI-targeted prostate cancer.



# Clinical Faculty



**Yuanxin Liang, MD, PhD**, Assistant Professor of Pathology. Clinical interests: breast pathology, gastrointestinal pathology, general surgical pathology.



**Jon S. Morrow, MD, PhD**, Raymond Yesner Professor of Pathology; Professor, MCD Biology. Clinical interests: hematologic and renal disorders.



**Krasi Rozenova, MD, PhD**, Assistant Professor of Pathology. Clinical interests: hematopathology, molecular genetic pathology, including tumor profiling of solid tumors and hematologic malignancies.



**Minhua Wang, MD, PhD, MS**, Assistant Professor of Pathology. Clinical interests: cytology, cytopathology.



**Chen Liu, MD, PhD**, Anthony N. Brady Professor of Pathology; Chair, Pathology; Chief of Pathology, YNHH, Pathology. Clinical interest: liver pathology.



**Peggy Myung, MD, PhD**, Associate Professor of Dermatology and of Pathology; Vice Chair of Research, Dermatology. Clinical interests: dermatopathology, clinical dermatology.



**Harry Sanchez, MD**, Assistant Professor; Director of Autopsy Services, Pathology; Director, Yale Legacy Tissue Donation Program, Pathology. Clinical interests: autopsy pathology, quality management, microbiology, medical education, medical history.



**Hao Wu, MD, PhD**, Associate Professor of Pathology. Clinical interests: pediatric solid tumors, diseases of the gastrointestinal tract, diseases of the bone and soft tissue.



**Wenyi Luo, MD, PhD**, Assistant Professor of Pathology. Clinical interest: GI pathology.



**ILKe Nalbantoglu, MD**, Associate Professor of Pathology. Clinical interests: gastrointestinal and liver pathology, pediatric pathology.



**Alexa Siddon, MD**, Professor of Laboratory Medicine; Hematopathology Fellowship Director, Laboratory Medicine; Director, Molecular Diagnostics Laboratory, Laboratory Medicine; Director, Flow Cytometry, Laboratory Medicine; Associate Director, Hematology Laboratory, Laboratory Medicine. Clinical interests: molecular and laboratory diagnosis of lympho-proliferative disorders.



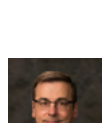
**Mina Xu, MD**, Professor of Pathology; Director of Hematopathology, Pathology; Director, Expert Consultation Practice, Pathology. Clinical interests: leukemia, lymphomas, myeloid neoplastic disorders.



**Declan McGuone, FRCPath Neuro, MBBS**, Associate Professor of Pathology. Clinical interests: neuropathy, forensic pathology, autopsy.



**Gauri Panse, MD**, Assistant Professor of Dermatology and Pathology. Clinical interests: dermatopathology and soft tissue pathology.



**John H. Sinard, MD, PhD**, Professor of Pathology and of Ophthalmology and Visual Science; Medical Director, Pathology Informatics, Pathology. Clinical interests: pathology informatics, ophthalmic pathology, autopsy, tumor pathology.



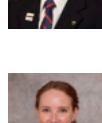
**Isil Yildiz, MD, MPH**, Assistant Clinical Professor of Pathology; Affiliated Faculty, Yale Institute for Global Health. Clinical interests: cytopathology, ultrasound-guided fine needle aspiration, general surgical pathology.



**Jennifer M. McNiff, MD**, Professor of Dermatology and Pathology; Director, Yale Dermatopathology Laboratory; Section Chief, Dermatopathology. Clinical interests: cutaneous lymphomas and clinicopathologic correlations.



**Vinita Parkash, MBBS, MPH**, Senior Research Scientist in Public Health (Health Policy); Associate Clinical Professor of Pathology; Affiliated Faculty, Yale Institute for Global Health. Clinical interests: gynecologic pathology, clinical quality patient safety.



**Kristin Stendahl, MD**, Assistant Professor of Pathology and Laboratory Medicine. Clinical interests: cytopathology, laboratory medicine, particularly transfusion medicine.



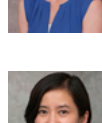
**Mingfu Yu, MD, MS**, Assistant Professor of Pathology; Medical Director of Anatomic Pathology at Saint Raphael Campus. Clinical interest: general surgical pathology.



**Christine Minerowicz, MD**, Assistant Professor; Chair & CLIA Medical Director, Bridgeport and Milford Campus Laboratories, Pathology. Clinical interests: pulmonary pathology, neoplastic and interstitial lung disease.



**Sudhir Perincheri, MBBS, PhD**, Assistant Professor of Pathology; Director of Digital Pathology, Pathology. Clinical interests: hematopathology, renal pathology, GU pathology, digital pathology.



**Tong Sun, MD, PhD**, Assistant Professor of Pathology. Clinical interests: cytopathology, molecular pathology, GU pathology.



**Sanhong Yu, MD, PhD**, Assistant Professor of Pathology. Clinical interests: cytopathology, head and neck pathology, soft tissue pathology and genitourinary pathology.



**Joseph Misdraji, MD**, Professor of Pathology; Director, Immunohistochemistry Laboratory, Pathology; Director, Gastrointestinal Pathology Fellowship Program, Pathology. Clinical interests: gastrointestinal pathology, appendices neoplasia, hepatic pathology.



**Manju Prasad, MD, MBBS**, Professor of Pathology; Director, Endocrine, Head & Neck Pathology Fellowship Program, Pathology; Director, Endocrine, Head and Neck Pathology, Pathology. Clinical interests: endocrine head and neck pathology.



**Sumi Thomas, MBBS**, Assistant Professor of Pathology. Clinical interests: anatomic pathology, cytopathology.



**Vladislav Zakharov, MD**, Assistant Professor of Pathology. Clinical interests: GI pathology, cytopathology.



**Gilbert Moeckel, MD, PhD, FASN**, Professor of Pathology; Director, Renal, Transplant Pathology and Electron Microscopy Laboratory, Pathology; Director, Renal & Genitourinary Fellowship Program, Pathology. Clinical interests: renal pathology, progression of interstitial fibrosis, acute kidney cell injury, renal cell carcinoma microenvironment.



**David Rimm, MD, PhD**, Anthony N. Brady Professor of Pathology and Professor of Medicine (Medical Oncology); Director, Yale Cancer Center Tissue Microarray Facility, Pathology; Director, Yale Pathology Tissue Services, Pathology; Director, Physician Scientist Training Program, Pathology Research. Clinical interests: immunohistochemistry and immunotherapy diagnostics.



**Zenta Walther, MD, PhD**, Associate Professor of Pathology; Director, Molecular Genetic Pathology Fellowship Program. Clinical interests: molecular pathology of solid tumors, precision medicine.



**Haiying Zhan, MD, PhD**, Assistant Professor of Pathology. Clinical interests: breast pathology, general pathology.



**Raffaella Morotti, MD**, Professor of Pathology and Pediatrics; Director, Pediatric Pathology, Pathology; Associate Director, Autopsy Service. Clinical interests: perinatal pathology, pathology of solid tumors (pediatric), pediatric liver disease.



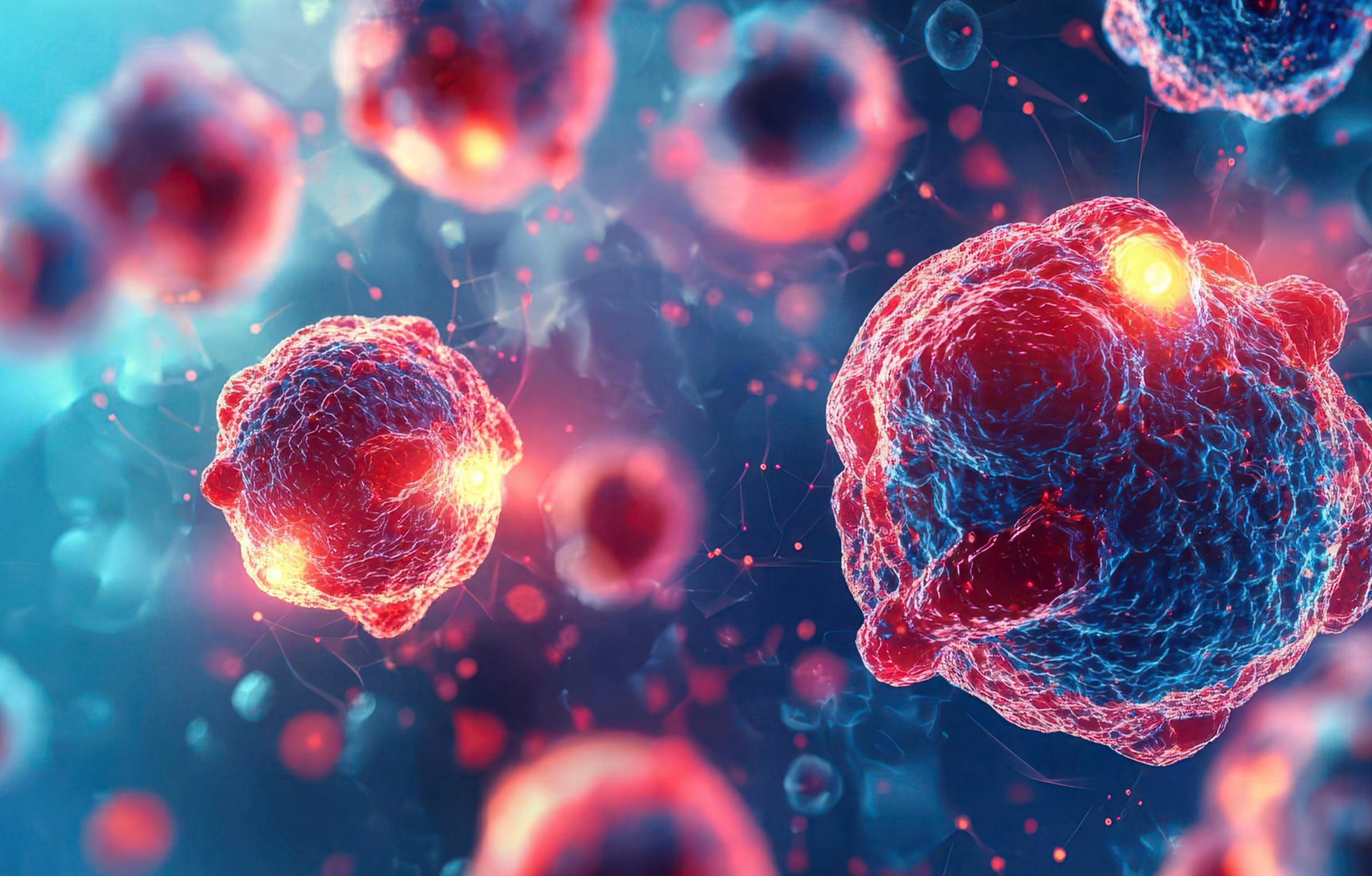
**Marie Robert, MD**, Professor of Pathology and of Medicine (Digestive Diseases). Clinical interests: celiac disease, pancreas cancer, immune therapy related gastroenteritis and colitis, fatty liver disease, hepatocellular carcinoma.



**He Wang, MD, PhD**, Associate Professor of Pathology; Director of Anatomic Pathology and Cytopathology, VA Connecticut Healthcare System, West Haven Campus, Pathology and Cytopathology; Director Cardiovascular Pathology, Pathology. Clinical interests: cardiovascular pathology, thoracic pathology.



**Xuchen Zhang, MD, PhD**, Professor of Pathology; Director, Gastrointestinal & Liver Pathology; Director, Gastrointestinal & Liver Pathology Fellowship Program, Pathology. Clinical interests: gastrointestinal and liver pathology; thoracic pathology.



**JANUARY**



# Cytopathology

The Cytopathology Service and Cytology Laboratory is staffed by nine cytopathologists, 14 cytotechnologists, nine clinical/preparatory technologists, and five administrative staff members. The laboratory provides comprehensive services to the hospital and its clinicians and to several clinicians in the community as part of our outreach mission. All types of cytologic specimens are routinely received and processed, including gynecologic and non-gynecologic cytology, fine needle aspiration biopsy, and specimens from consultation services. The Cytopathology personnel participate fully in the teaching programs of the hospital and medical school. An active clinical research program is distributed among the team members.

## OUR SERVICES

- World-recognized expertise in Cytopathology consultation and education
- Maintenance of excellent patient care activities, using the newest and most cost-effective technology available. In addition, new modes of ancillary testing for neoplasia detection, prognosis, and classification are being tested and added as appropriate
- Use of upgraded computerized-automated ThinPrep slide imaging system
- Performance and provision of rapid on-site interpretation of fine needle aspirations of palpable and non-palpable masses obtained under radiologic guidance.
- Development and incorporation of new and advanced diagnostic techniques in cytology specimen procurement and processing, and fostering an environment in which clinical, translational, and basic research can be successfully performed.

## OUR TEAM

Adebowale Adeniran, MD, Director  
 Guoping Cai, MD, MS, Associate Director  
 Rita Abi-Raad, MD  
 Uma Krishnamurti, MD, MBBS, PhD  
 Angelique W. Levi, MD  
 He Wang, MD, PhD  
 Tong Sun, MD, PhD  
 Minhua Wang, MD, PhD, MS  
 Kristin Stendahl, MD  
 Sanhong Yu, MD, PhD  
 Darin Dolezal, MD/PhD



### DECEMBER

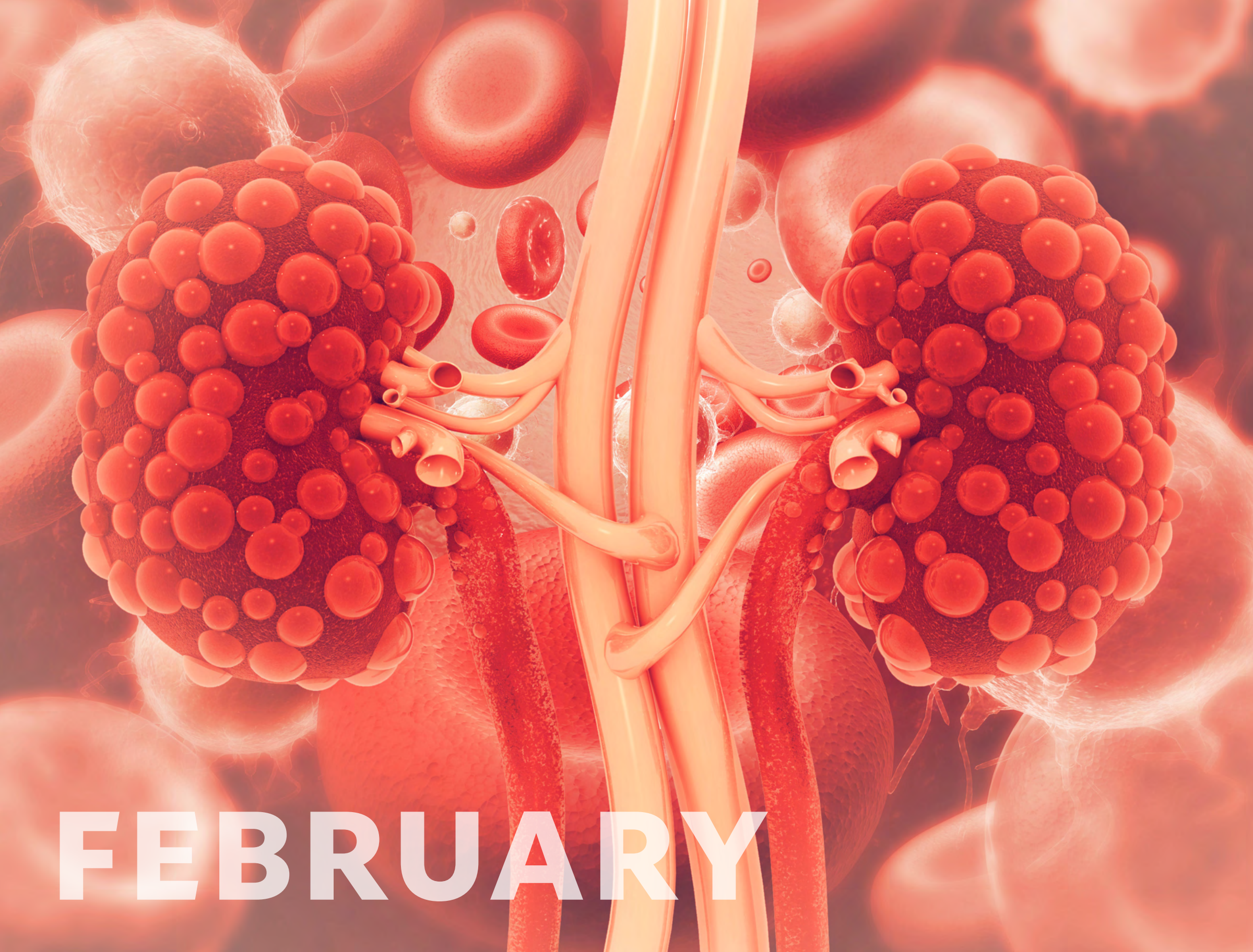
S	M	T	W	T	F	S
1	2	3	4	5	6	7
8	9	10	11	12	13	14
15	16	17	18	19	20	21
22	23	24	25	26	27	28
29	30	31				

### FEBRUARY

S	M	T	W	T	F	S
						1
2	3	4	5	6	7	8
9	10	11	12	13	14	15
16	17	18	19	20	21	22
23	24	25	26	27	28	

# JANUARY 2025

Sunday	Monday	Tuesday	Wednesday	Thursday	Friday	Saturday
29	30	31	1	2	3	4
5	6	7	8	9	10	11
12	13	14	15	16	17	18
19	20	21	22	23	24	25
26	27	28	29	30	31	1



**FEBRUARY**

## Renal Pathology and Electron Microscopy

**The Renal Pathology and Electron Microscopy Laboratory** at Yale is world-renowned for accurate, timely, and personalized kidney biopsy and electron microscopy diagnostic services. The Lab offers light microscopy, immunofluorescence, and electron microscopy analysis on all kidney biopsy specimens and specialized testing for rare diseases such as Alport's syndrome, collagenous fibrillary nephropathy, amyloidosis, and monoclonal light chain-mediated diseases. We are bringing advanced technology (confocal IF, immune EM) to the practice of renal pathology to enhance diagnostic accuracy. We also provide electron microscopy analysis for viral diseases (Corona virus, CMV, Polyoma virus), ciliary disease, tumors of unknown origin, and parasitic diseases. We provide clients within the United States and abroad with timely, accurate, and personalized diagnostic services. Our reports are accessible to international clients through the Yale RELAY online reporting system 24 hours a day. Dr. Moeckel has been the director of the Renal & EM Laboratory since 2008 and has expanded the Lab's national and international reputation as one of the leading diagnostic renal and EM pathology labs in the world.

### OUR TEAM

**Gilbert Moeckel, MD, PhD, FASN**, Director  
**Sudhir Perincheri, MD, PhD, MBBS**  
**Gabriel Lerner, MD, MS**



### JANUARY

S	M	T	W	T	F	S
			1	2	3	4
5	6	7	8	9	10	11
12	13	14	15	16	17	18
19	20	21	22	23	24	25
26	27	28	29	30	31	

### MARCH

S	M	T	W	T	F	S
						1
2	3	4	5	6	7	8
9	10	11	12	13	14	15
16	17	18	19	20	21	22
23	24	25	26	27	28	29
30	31					

# FEBRUARY 2025

Sunday	Monday	Tuesday	Wednesday	Thursday	Friday	Saturday
26	27	28	29	30	31	1
2	3	4	5	6	7	8
9	10	11	12	13	14	15
16	17	18	19	20	21	22
23	24	25	26	27	28	1



**MARCH**

# Genitourinary Pathology

The Yale Program in Genitourinary Pathology provides nationally leading pathologic diagnostic expertise in genitourinary (GU) diseases, particularly prostate, kidney, bladder, and testis cancer. The GU Pathology director, Dr. Peter Humphrey, is co-author of national GU pathology practice guidelines and several GU pathology textbooks. Our group of dedicated GU pathology subspecialists offers expert, in-depth histopathologic slide interpretations, state-of-the-art immunophenotyping, and access to Yale Pathology molecular genetic GU tumor profiling. We are engaged in GU translational cancer research, such as use of machine learning and artificial intelligence in prostate cancer diagnosis, grading, and prognostication, using H&E-stained slides. Yale Genitourinary Pathology Services in Yale Pathology Labs thus will continue to lead in providing the best diagnosis, enhanced by innovative technological tools, for patients with diseases of the genitourinary system.

## OUR TEAM

- Peter A. Humphrey, MD, PhD, Director
- Adebowale Adeniran, MD
- Guoping Cai, MD, MS
- Angelique W. Levi, MD
- Deepika Kumar, MD
- Sudhir Perincheri, MD, PhD, MBBS



# MARCH 2025

## FEBRUARY

S	M	T	W	T	F	S
						1
2	3	4	5	6	7	8
9	10	11	12	13	14	15
16	17	18	19	20	21	22
23	24	25	26	27	28	

## APRIL

S	M	T	W	T	F	S
		1	2	3	4	5
6	7	8	9	10	11	12
13	14	15	16	17	18	19
20	21	22	23	24	25	26
27	28	29	30			

Sunday	Monday	Tuesday	Wednesday	Thursday	Friday	Saturday
23	24	25	26	27	28	1
2	3	4	5	6	7	8
9	10	11	12	13	14	15
16	17	18	19	20	21	22
23	24	25	26	27	28	29
30	31	1	2	3	4	5



**APRIL**

# Hematopathology

The Yale Hematopathology Program specializes in the evaluation of lymph nodes, bone marrow, blood, spleen, and hematolymphoid tissues in all organs. The strength of the service lies in the expertise of our hematopathology board-certified faculty. Our group receives external biopsy consultations from across the nation and international sites for primary diagnoses as well as second opinions. Challenging cases are discussed at our regular consensus conferences. Yale hematopathologists are advancing the field with their research into predictive biomarkers, pathways of cell death, and novel/emerging tools that lead to precision diagnostics. Their strong collaboration with immunology, genetics, hematology, and oncology allows for promising new discoveries. The faculty regularly teach other subspecialists at national and international conferences.

Our average turnaround time for rush biopsies is less than 24 hours. Urgent results incorporating aspirate morphology, histology, flow cytometry, immunohistochemistry, FISH/cytogenetic, and state-of-the-art molecular studies, as necessary, are reported immediately to submitting physicians.

## OUR TEAM

- Mina Xu, MD, Director
- Demetrios Braddock, MD, PhD
- Samuel Katz, MD, PhD
- Sudhir Perincheri, MD, PhD, MBBS
- Alexa Siddon, MD
- Deepika Kumar, MD
- Po-Han Chen, MD, PhD
- Krasi Rozenova, MD, PhD



# APRIL 2025

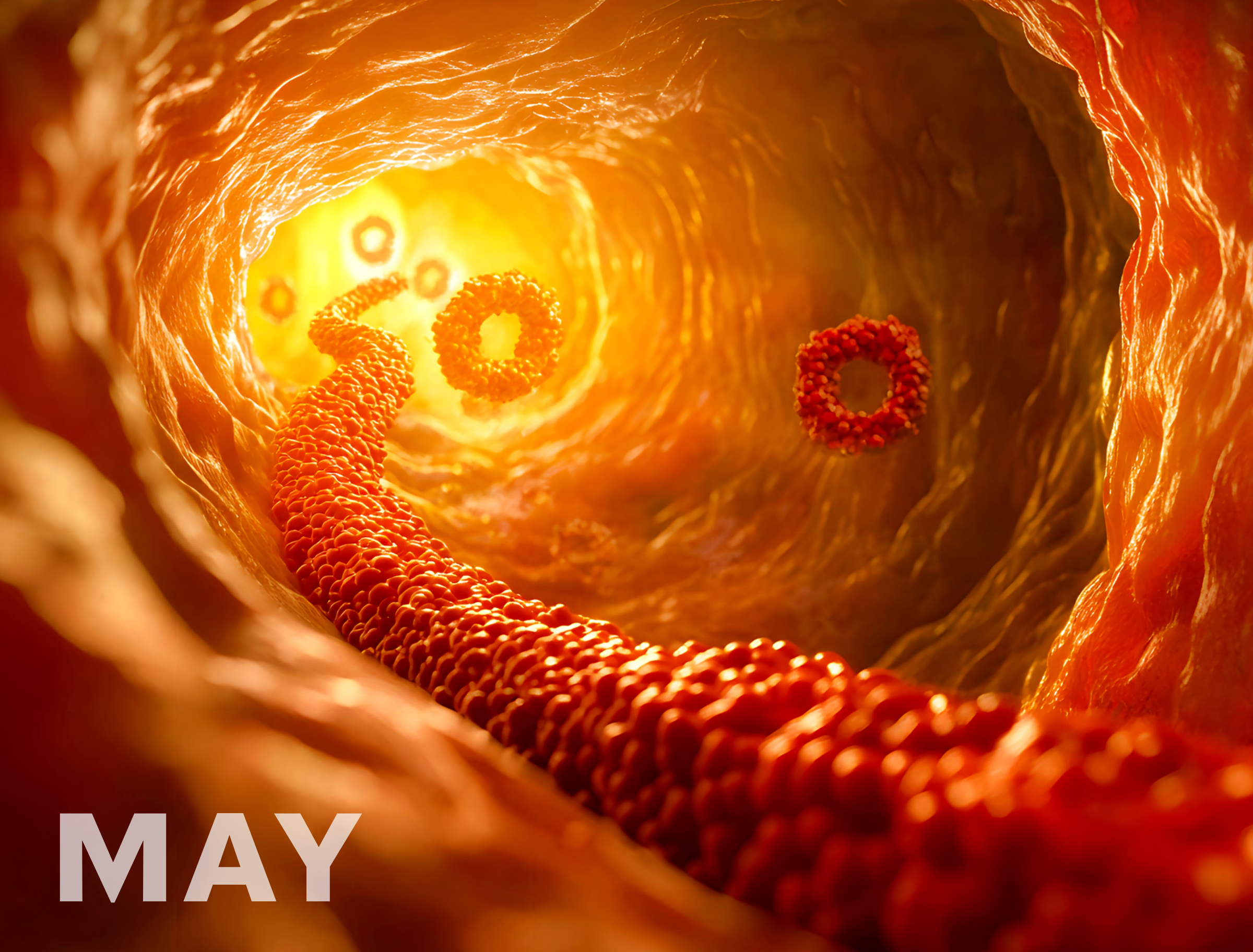
## MARCH

S	M	T	W	T	F	S
						1
2	3	4	5	6	7	8
9	10	11	12	13	14	15
16	17	18	19	20	21	22
23	24	25	26	27	28	29
30	31					

## MAY

S	M	T	W	T	F	S
					1	2
3	4	5	6	7	8	9
10	11	12	13	14	15	16
17	18	19	20	21	22	23
24	25	26	27	28	29	30
31						

Sunday	Monday	Tuesday	Wednesday	Thursday	Friday	Saturday
30	31	1	2	3	4	5
6	7	8	9	10	11	12
13	14	15	16	17	18	19
20	21	22	23	24	25	26
27	28	29	30	1	2	3



**MAY**



## Yale Cardiovascular Pathology

The Yale Cardiovascular Pathology Service provides comprehensive diagnostic expertise in the pathology of the heart and blood vessels, and our services include the most up-to-date classification of antibody and acute cellular rejection in adult and pediatric transplanted hearts. Our team of expert cardiovascular pathologists are world-renowned and have decades of experience. We receive and review 2,000 cardiovascular specimens annually. Our faculty members collaborate closely with cardiologists, cardiac surgeons, cardiovascular radiologists, and translational investigators.

### OUR TEAM

He (Peter) Wang, MD, PhD, Director  
 Sanja Dacic, MD, PhD  
 Robert Homer, MD, PhD  
 Guoping Cai, MD, MS  
 Xuchen Zhang, MD, PhD  
 Yibing Qyang, PhD  
 Christine Minerowicz, MD  
 Deepika Kumar, MD  
 Alexander Ladenheim, MD

## Thoracic Pathology

The Yale Thoracic Pathology Program offers comprehensive diagnostic services on biopsies and resections from the lung, mediastinum, and chest wall. Results of comprehensive examinations are rendered emphasizing prognosis and prediction of therapy response. We are engaged in thoracic cancer research looking at genomic and other predictors of response to cancer therapy. The team's expertise includes lung cancer, interstitial lung disease, mesothelioma, thymic lesions, and lung transplantation.

### OUR TEAM

Sanja Dacic, MD, PhD, Director  
 Christine Minerowicz, MD, BA  
 Robert Homer, MD, PhD  
 Alexander Ladenheim, MD



### APRIL

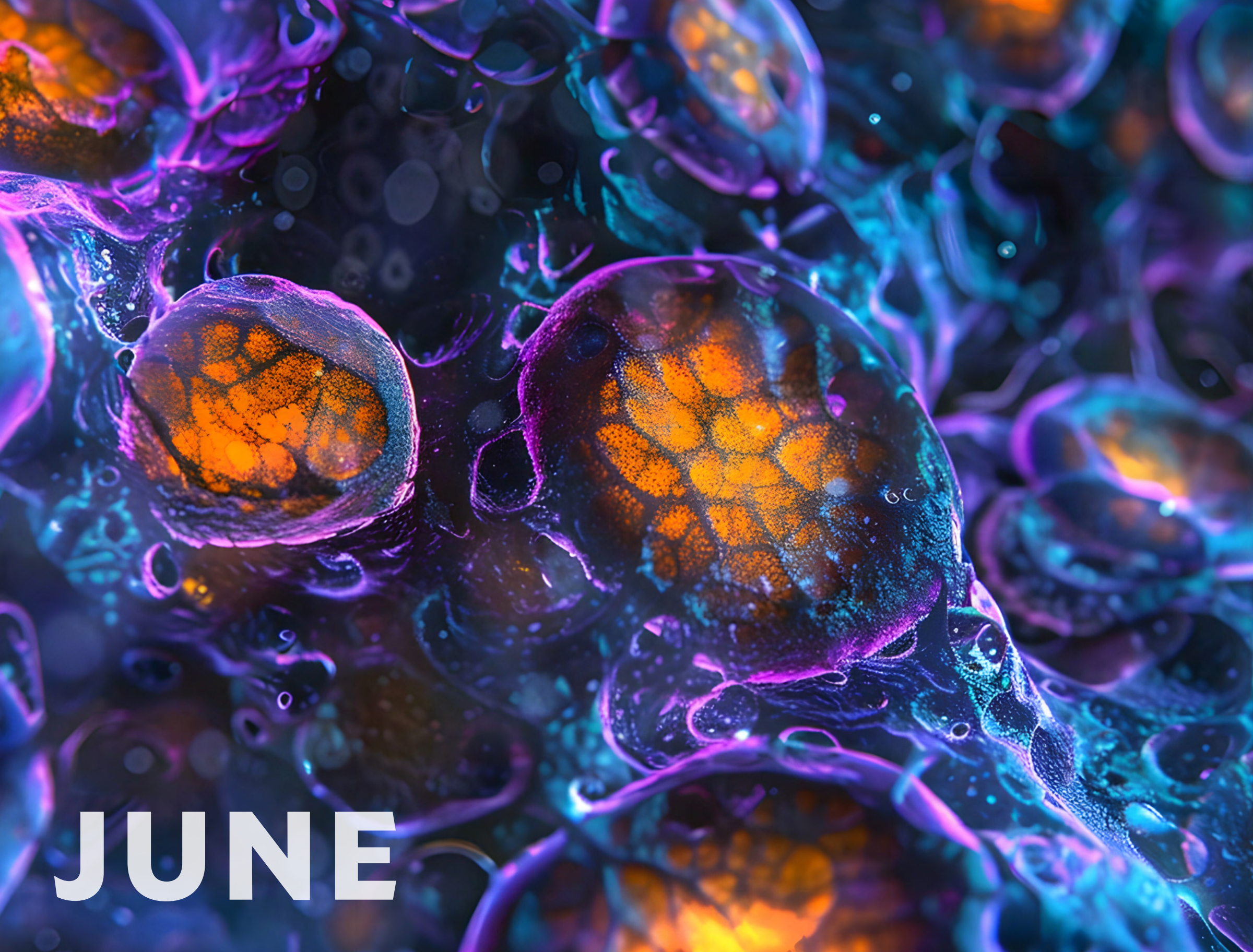
S	M	T	W	T	F	S
		1	2	3	4	5
6	7	8	9	10	11	12
13	14	15	16	17	18	19
20	21	22	23	24	25	26
27	28	29	30			

### JUNE

S	M	T	W	T	F	S
1	2	3	4	5	6	7
8	9	10	11	12	13	14
15	16	17	18	19	20	21
22	23	24	25	26	27	28
29	30					

# MAY 2025

Sunday	Monday	Tuesday	Wednesday	Thursday	Friday	Saturday
27	28	29	30	1	2	3
4	5	6	7	8	9	10
11	12	13	14	15	16	17
18	19	20	21	22	23	24
25	26	27	28	29	30	31



**JUNE**

## Endocrine, Head & Neck Pathology

The only one in Connecticut and one of a few in the U.S. and the world, the **Yale Endocrine, Head & Neck Pathology Program** deals with tumors of the head and neck and of major endocrine glands (thyroid, parathyroids and adrenals). The subspecialty practice has board-certified pathologists including an oral and ophthalmic pathologist and an ACGME-approved fellowship. The team supports the Smilow Cancer Hospital, a tertiary referral center that treats many complex cancers and rare diseases of the head, neck, and endocrine organs. We offer comprehensive diagnostic services on oral biopsy and cytology, including jaw tumors and cysts, to the Yale Oral and Maxillofacial Surgery Program and several dental practices in Connecticut.

Our well-appointed immunohistochemistry and molecular laboratories help disease management through routinely offering tests for p16, PD-L1, high-risk HPV types and gene fusions on formalin-fixed paraffin-embedded head and neck cancers. The Program is led by an experienced, fellowship-trained pathologist of national and international repute who is available and readily accessible for second opinions and consultations.

### OUR TEAM

**Manju Prasad, MD, MBBS**, Director  
**Alexander Ladenheim, MD**  
**John Sinard, MD, PhD**  
**Sanhong Yu, MD**  
**Jeffrey Eskendri, DMD**



### MAY

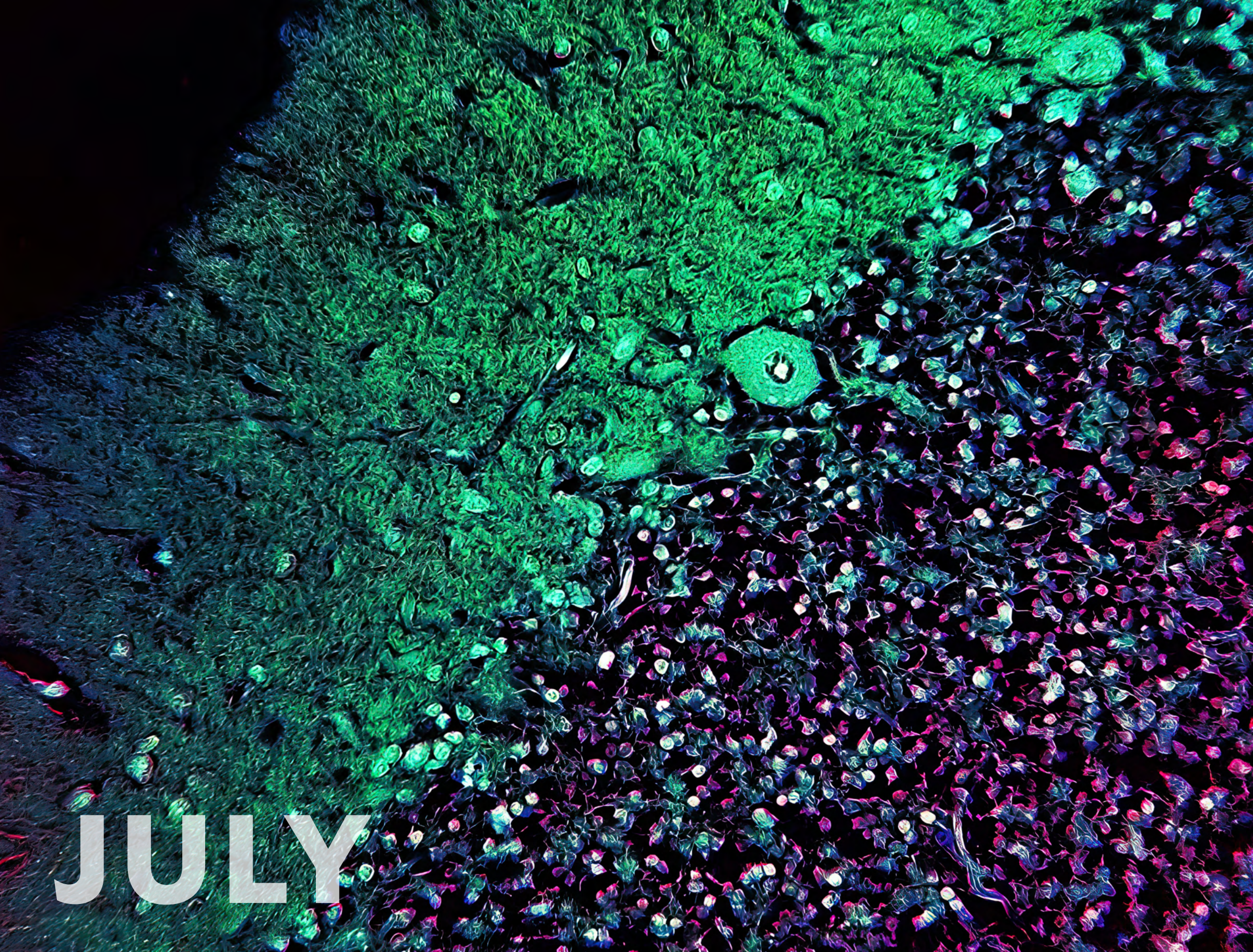
S	M	T	W	T	F	S
				1	2	3
4	5	6	7	8	9	10
11	12	13	14	15	16	17
18	19	20	21	22	23	24
25	26	27	28	29	30	31

### JULY

S	M	T	W	T	F	S
		1	2	3	4	5
6	7	8	9	10	11	12
13	14	15	16	17	18	19
20	21	22	23	24	25	26
27	28	29	30	31		

# JUNE 2025

Sunday	Monday	Tuesday	Wednesday	Thursday	Friday	Saturday
1	2	3	4	5	6	7
8	9	10	11	12	13	14
15	16	17	18	19	20	21
22	23	24	25	26	27	28
29	30	1	2	3	4	5



JULY

# Neuropathology

The Yale Neuropathology Service specializes in the evaluation of disorders involving brain, spinal cord, skeletal muscle, and peripheral nerve for adult and pediatric patients. All faculty members are subspecialty trained and board-certified in neuropathology. Aside from acute, intraoperative frozen section coverage, which is exclusively provided by board-certified neuropathologists, faculty members are also expert consultants for the postmortem assessment of neurological disorders. The Neuropathology Service aims to provide excellent clinical care while incorporating cutting-edge molecular technologies into daily practice for primary and consultation cases. Complex cases are discussed in detail among expert neuropathologists at weekly consensus conferences and ad hoc. All faculty members are involved nationally and internationally in professional societies and actively contribute to advancements in the field. The Service also offers a highly competitive ACGME-accredited two-year fellowship in neuropathology, which prepares for board certification in neuropathology and academic practice.

## SERVICES AND EXPERTISE

The Yale Neuropathology Service provides diagnostic services to Yale New Haven Hospital and Smilow Cancer Hospital. In addition, the Yale Neuropathology Team provides expert diagnostic care for surrounding hospitals, including the Saint Raphael Campus in New Haven, Bridgeport Hospital, Greenwich Hospital, Milford Hospital, and Griffin Hospital. We also have an open-access brain donation program for patients and families who wish to support basic and translational research into causes and potential treatments for age-related neurologic diseases, the Center for Human Brain Discovery.

## OUR TEAM

Pallavi Gopal, MD, PhD, Director  
 Declan McGuone, FRCPath Neuro, MBChB  
 Marcello DiStasio, MD, PhD  
 Anita Huttner, MD



# JULY 2025

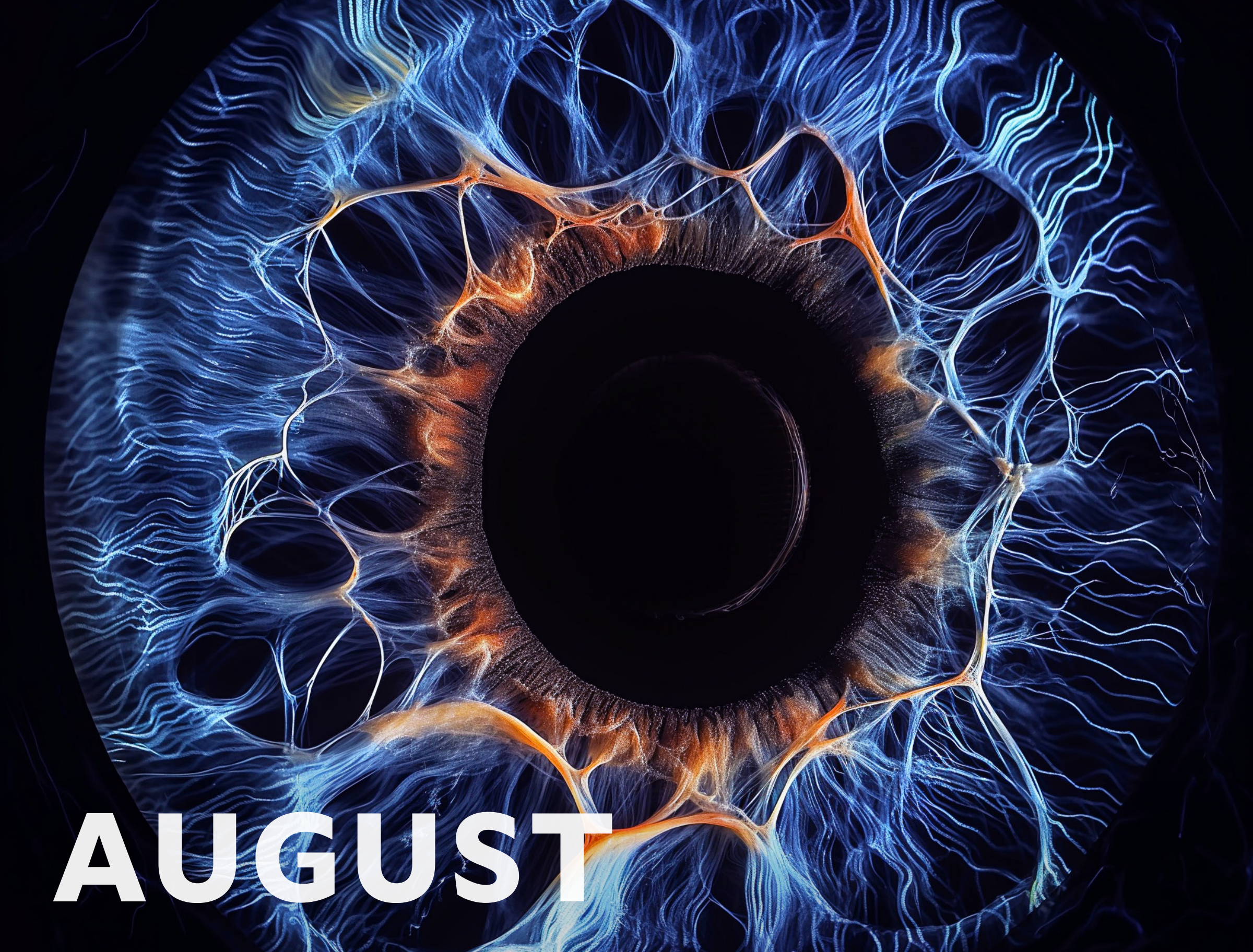
## JUNE

S	M	T	W	T	F	S
1	2	3	4	5	6	7
8	9	10	11	12	13	14
15	16	17	18	19	20	21
22	23	24	25	26	27	28
29	30					

## AUGUST

S	M	T	W	T	F	S
						1 2
3	4	5	6	7	8	9
10	11	12	13	14	15	16
17	18	19	20	21	22	23
24	25	26	27	28	29	30
31						

Sunday	Monday	Tuesday	Wednesday	Thursday	Friday	Saturday
29	30	1	2	3	4	5
6	7	8	9	10	11	12
13	14	15	16	17	18	19
20	21	22	23	24	25	26
27	28	29	30	31	1	2



**AUGUST**



# Ophthalmic Pathology

The eye and its surrounding structures (eyelids, conjunctiva, cornea, orbit, globe) represent a unique portion of the human anatomy. Many of the diseases that affect this area are unique to the peri-ocular region or use a different terminology. Yale Pathology has responded to the unique needs of ophthalmologists by developing a subspecialty service in Ophthalmic Pathology. The Service receives specimens from the Yale Ophthalmology Clinic and from private ophthalmology offices throughout the state. **The Yale Ophthalmic Pathology Program** is also responsible for educating both the pathology residents and the ophthalmology residents in ophthalmic pathology.

### LEADERSHIP

**John Sinard, MD, PhD**, Director

# Immunohistochemistry Laboratory

**The Yale Immunohistochemistry (IHC) Laboratory** provides CAP/CLIA-certified high-quality state-of-the-art specialized revolutionary technologic services in immunohistochemistry, immunofluorescence, and in-situ hybridization. Immunohistochemistry plays a key role in diagnosis, prognosis, and therapeutics. The laboratory offers over 250 antibodies for the diagnostic work-up of various malignancies and infectious diseases. We maintain quality control systems that address technical issues related to staining and instrumentation to enhance laboratory-based quality of care for our patients. We use robust positive and negative controls, significantly reducing false negative and false positive results. Select multiplexed technologies are available that will allow two or more antibodies to be investigated simultaneously at different subcellular localizations. This has the added advantage of conserving critical tissue for potential molecular testing essential to patient care.

### OUR TEAM

**Joseph Misdraji, MD**, Director  
**Yuanxin Liang, MD, PhD**, Assistant Director

### JULY

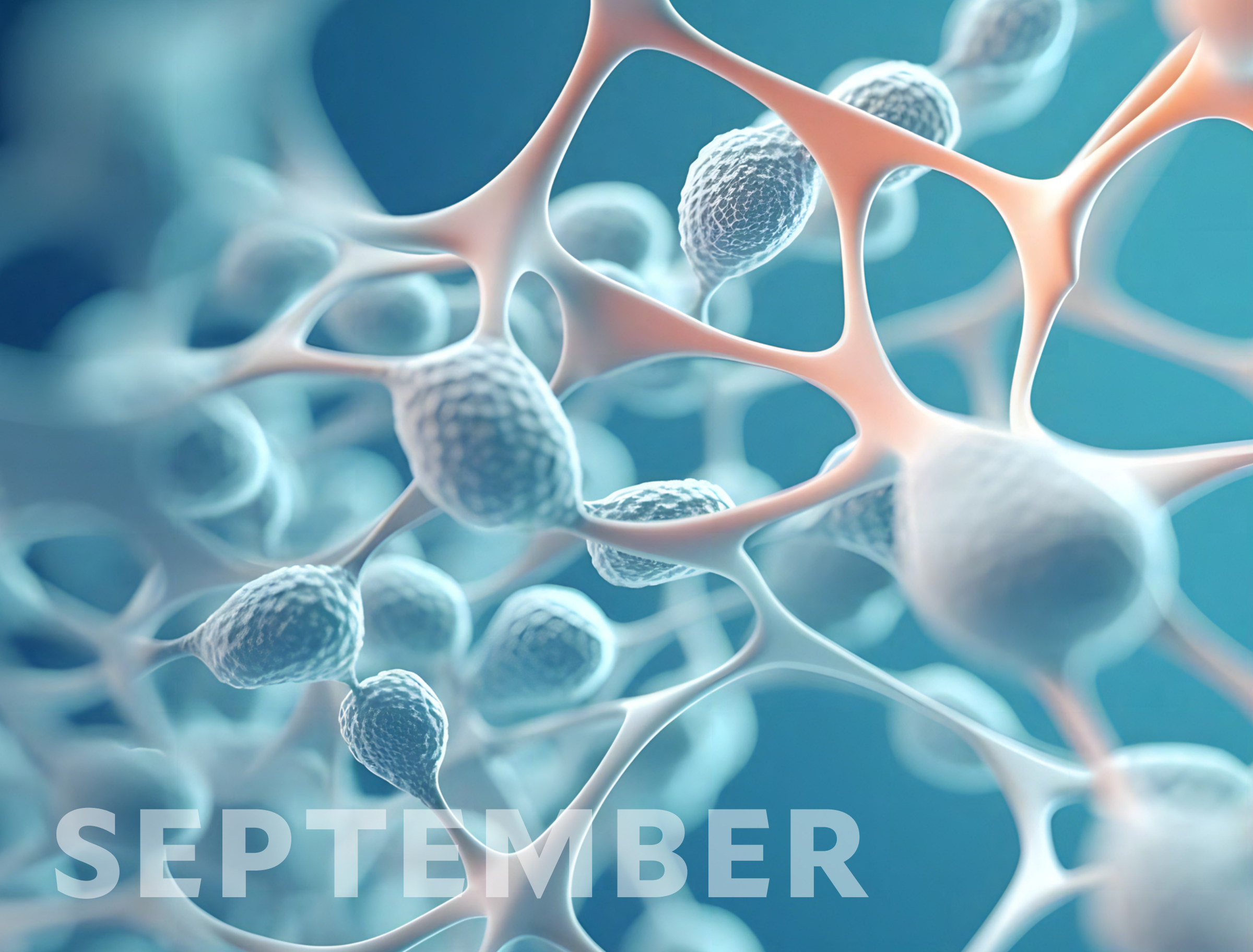
S	M	T	W	T	F	S
		1	2	3	4	5
6	7	8	9	10	11	12
13	14	15	16	17	18	19
20	21	22	23	24	25	26
27	28	29	30	31		

### SEPTEMBER

S	M	T	W	T	F	S
	1	2	3	4	5	6
7	8	9	10	11	12	13
14	15	16	17	18	19	20
21	22	23	24	25	26	27
28	29	30				

# AUGUST 2025

Sunday	Monday	Tuesday	Wednesday	Thursday	Friday	Saturday
27	28	29	30	31	1	2
3	4	5	6	7	8	9
10	11	12	13	14	15	16
17	18	19	20	21	22	23
24	25	26	27	28	29	30
31	1	2	3	4	5	6



SEPTEMBER



## Bone and Soft Tissue Pathology

The Yale Bone and Soft Tissue Pathology team is composed of surgical pathologists from the Yale New Haven campus who have experience and interest in neoplastic and non-neoplastic diseases of the musculoskeletal system. We work in close alliance with the musculoskeletal radiology group to provide the best diagnostic service for all clinicians. We examine all biopsy and resection specimens using gross evaluation and light microscopic and immunohistochemical techniques. We also employ advanced methods to probe protein expression and genetic alterations harbored in the patient's pathologic tissues. The data resulting from examination of the specimens are interpreted in the context of the clinical presentation and the results of diagnostic imaging studies. For complex tumor cases, a weekly multidisciplinary Tumor Board is held to make informed decisions on treatment and follow-up of the patient. We also provide a yearly series of bone and soft tissue lectures to educate residents and fellows. Research efforts primarily involve retrospective clinicopathological correlations compiling and evaluating the experience at our institution.

### OUR TEAM

Hao Wu, MD, PhD, Director  
 Gauri Panse, MD  
 Harry Sanchez, MD  
 Mingfu Yu, MD, MS

## Pediatric and Perinatal Pathology

The Yale Pediatric Pathology Service provides diagnostic expertise for diseases occurring in the pediatric age range (0-21 years). In addition, the service covers perinatal pathology, with inclusion of evaluation for fetal malformations, complex congenital malformations, perinatal and pediatric autopsies, and placental pathology. Specific areas of interest include also pediatric liver diseases, pediatric gastrointestinal pathology, and tumors of pediatric age.

### OUR TEAM

Raffaella Morotti, MD, Director  
 Hao Wu, MD, PhD



### AUGUST

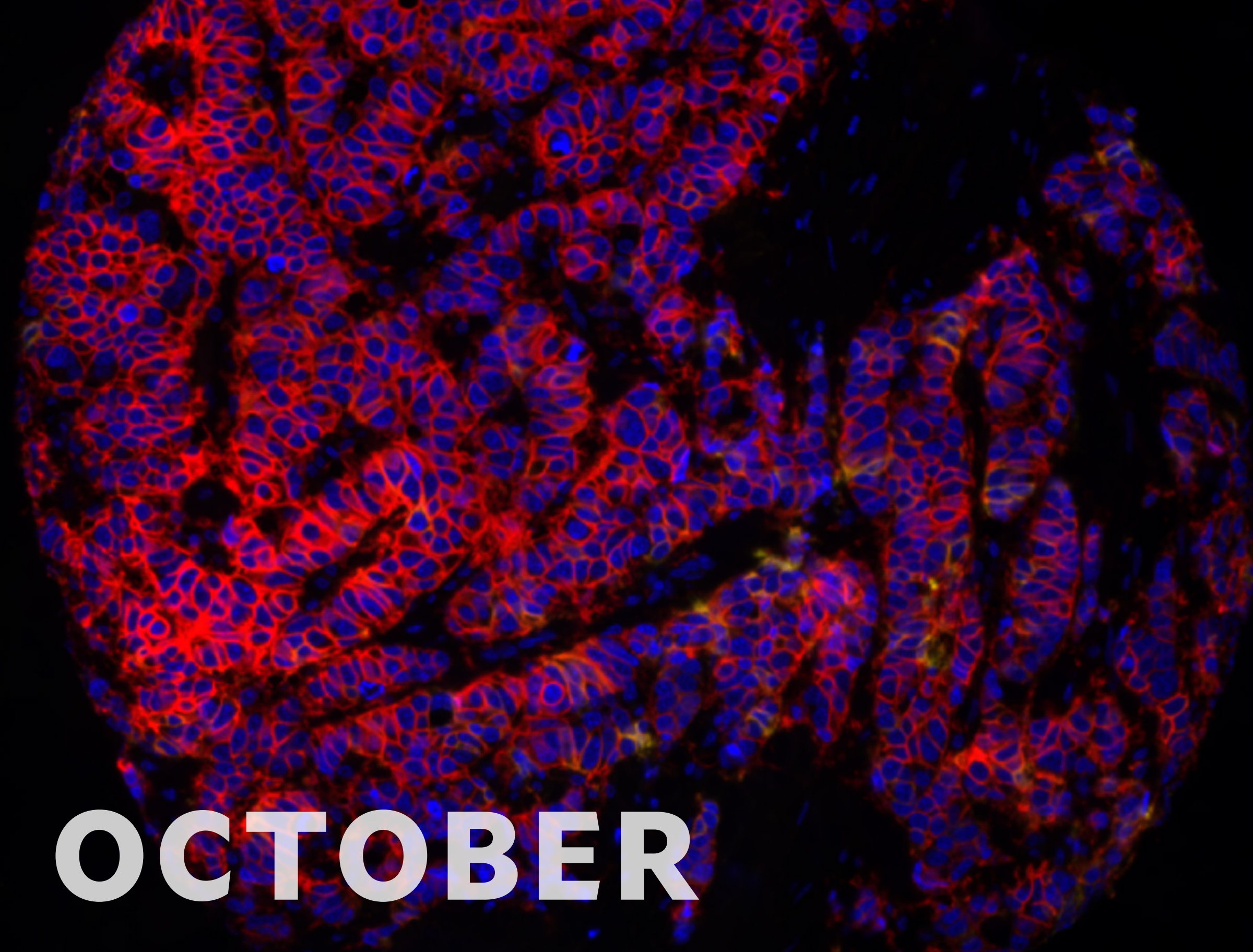
S	M	T	W	T	F	S
					1	2
3	4	5	6	7	8	9
10	11	12	13	14	15	16
17	18	19	20	21	22	23
24	25	26	27	28	29	30
31						

### OCTOBER

S	M	T	W	T	F	S
				1	2	3
4	5	6	7	8	9	10
11	12	13	14	15	16	17
18	19	20	21	22	23	24
25	26	27	28	29	30	31

# SEPTEMBER 2025

Sunday	Monday	Tuesday	Wednesday	Thursday	Friday	Saturday
31	1	2	3	4	5	6
7	8	9	10	11	12	13
14	15	16	17	18	19	20
21	22	23	24	25	26	27
28	29	30	1	2	3	4



**OCTOBER**

## Center of Excellence for Women's Health

The Yale Pathology Center of Excellence for Women's Health encompasses Gynecologic and Breast Pathology clinical diagnostic services across all hospitals in the Yale New Haven Health System. The Center helps foster collaborative relationships throughout and beyond Yale School of Medicine and YNHH (Yale New Haven Hospital), focusing on the pursuit of excellence in academic Gynecologic and Breast Pathology.

### LEADERSHIP

Natalia Buza, MD, Director

## Breast Pathology

The Yale Breast Pathology Service focuses on precise diagnosis and providing reliable results. Board-certified pathologists with expertise in breast subspecialty interpret challenging breast cases daily. In addition to performing comprehensive studies and paying attention to detail to ensure accuracy, we review difficult diagnoses at daily consensus conferences where challenging cases are presented and discussed. Additionally, we perform necessary ancillary biomarker testing and facilitate molecular testing to aid in patient management. Faculty members are also actively engaged in collaborative translational research in breast pathology. Pathology team members are vital contributors to The Center for Breast Cancer at Smilow Cancer Hospital, which is accredited by the National Accreditation Program for Breast Centers and was the first National Cancer Institute Comprehensive Cancer Center in the Northeast to hold this designation.

### OUR TEAM

Uma Krishnamurti, MD, MBBS, PhD, Director  
 Yuanxin Liang, MD  
 Haiying Zhan, MD, PhD  
 Mohamed Kahila, MBBCh  
 Lorraine Colón-Cartagena, MD



# OCTOBER 2025

### SEPTEMBER

S	M	T	W	T	F	S
	1	2	3	4	5	6
7	8	9	10	11	12	13
14	15	16	17	18	19	20
21	22	23	24	25	26	27
28	29	30				

### NOVEMBER

S	M	T	W	T	F	S
						1
2	3	4	5	6	7	8
9	10	11	12	13	14	15
16	17	18	19	20	21	22
23	24	25	26	27	28	29
30						

Sunday	Monday	Tuesday	Wednesday	Thursday	Friday	Saturday
28	29	30	1	2	3	4
5	6	7	8	9	10	11
12	13	14	15	16	17	18
19	20	21	22	23	24	25
26	27	28	29	30	31	1



**NOVEMBER**

## Gastrointestinal and Liver Pathology

Gastrointestinal disorders range from common ailments such as acid reflux, colon polyps, and gallstones to chronic inflammatory diseases, infections and cancers of the colon, liver, and pancreas. **The Gastrointestinal Pathology Service** at Yale is composed of a team of nationally recognized specialists who are devoted to the accurate and timely diagnosis of diseases of the intestinal tract, liver, pancreas, gallbladder, and biliary system. We provide expert diagnostic services for biopsy and resection specimens, with an emphasis on complete, accurate, and rapid reporting. More than 80% of diagnostic biopsies are finalized within 24 hours. We analyze more than 25,000 specimens annually, with a high proportion of medically complex cases and oncologic diseases. We also provide consultation to clinical care providers, fostering the integrated management of patients.

Our pathologists are actively engaged in innovative clinical and translational research and have a firm commitment to clinical and academic excellence and quality, patient-centered care. We serve as a referral center for consultations from other institutions regionally, nationally, and internationally. Our division is supported by state-of-the-art molecular diagnostics and immunohistochemistry laboratories, providing molecular profiling of tumors and genomic analysis, furthering the pursuit of personalized medicine..

### OUR TEAM

**Xuchen Zhang, MD, PhD**, Director  
**Andrea Barbieri, MD**  
**Joanna Gibson, MD, PhD**  
**Won Jae Huh, MD, PhD**  
**Dhanpat Jain, MD**  
**Yuanxin Liang, MD**  
**Chen Liu, MD, PhD**  
**Wenyi Luo, MD, PhD**  
**Haris Mirza MD, PhD**  
**Joseph Misdraji, MD**  
**ILKe Nalbantoglu, MD**  
**Marie Robert, MD**



### OCTOBER

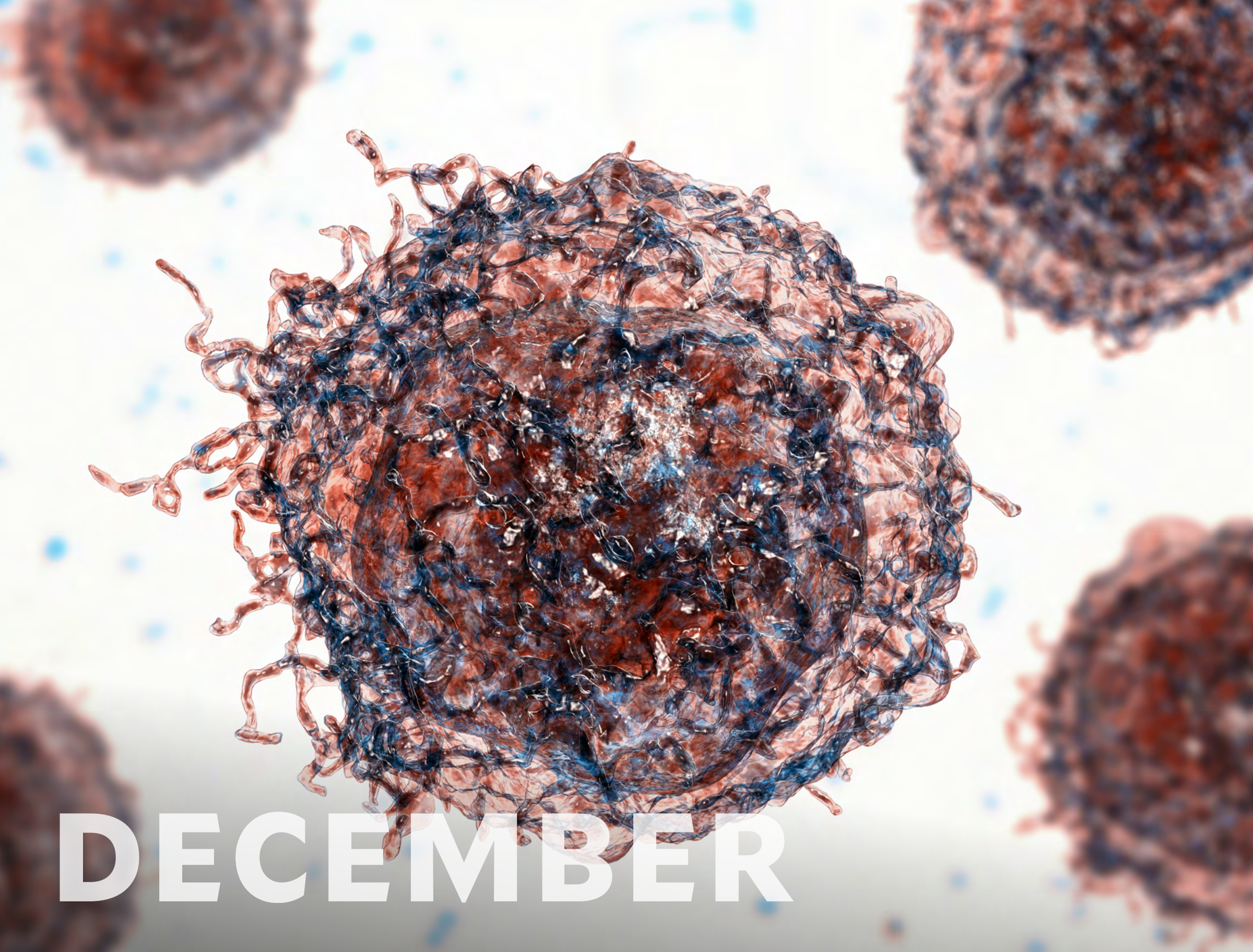
S	M	T	W	T	F	S
			1	2	3	4
5	6	7	8	9	10	11
12	13	14	15	16	17	18
19	20	21	22	23	24	25
26	27	28	29	30	31	

### DECEMBER

S	M	T	W	T	F	S
	1	2	3	4	5	6
7	8	9	10	11	12	13
14	15	16	17	18	19	20
21	22	23	24	25	26	27
28	29	30	31			

# NOVEMBER 2025

Sunday	Monday	Tuesday	Wednesday	Thursday	Friday	Saturday
26	27	28	29	30	31	1
2	3	4	5	6	7	8
9	10	11	12	13	14	15
16	17	18	19	20	21	22
23	24	25	26	27	28	29
30	1	2	3	4	5	6



**DECEMBER**

## Center of Excellence for Women's Health

The Yale Pathology Center of Excellence for Women's Health encompasses Gynecologic and Breast Pathology clinical diagnostic services across all hospitals in the Yale New Haven Health System. The Center helps foster collaborative relationships throughout and beyond Yale School of Medicine and YNHH, focusing on the pursuit of excellence in academic Gynecologic and Breast Pathology.

### LEADERSHIP

**Natalia Buza, MD**, Director

## Gynecologic Pathology

**Yale Gynecologic (GYN) Pathology Service** enjoys a dynamic, high-volume subspecialty service with rigorous engagements in clinical service, translational research, and education. The Service benefits from the outstanding clinical materials afforded by Yale New Haven Hospital's world-class gynecologic oncology program. The in-house case material is supplemented by the unique and complex consult cases from all over the U.S. and around the world. This setting generates approximately 15,000 gynecological specimens annually. One of the long-term academic goals is to build an outstanding gynecological pathology program with emphasis on diagnostic tissue evaluation, oncological biomarker identification and clinical applications, and understanding the pathogenesis of various gynecological cancers. The academic environment of the GYN pathology program is highly dynamic and exciting. The faculty members are highly experienced and enjoy world-class reputations in diagnostic and investigative work in all aspects of gynecological pathology. Their expertise in the intraoperative frozen section consultation for gynecological tumors and diagnostic workup of trophoblastic disease is unparalleled. Senior faculty are responsible editors/authors for the 4th, 5th and upcoming 6th editions of The WHO Classifications of Tumors of Female Reproductive Organs in 2014, 2020 and 2025, respectively. The recently established "Center for Precision Medicine of Trophoblastic Disease" is dedicated to advancing precision medicine by leveraging the latest molecular discoveries and novel treatment options of gestational trophoblastic disease, a joint effort by the Department of Pathology and Department of Obstetrics, Gynecology & Reproductive sciences.

### OUR TEAM

**Pei Hui, MD, PhD**, Director  
**Natalia Buza, MD**  
**Rita Abi-Raad, MD**  
**Uma Krishnamurti, MD**  
**Vinita Parkash, MBBS, MPH**  
**Sumi Thomas, MD**  
**Tong Sun, MD, PhD**  
**Minhua Wang, MD, PhD, MS**



### NOVEMBER

S	M	T	W	T	F	S
						1
2	3	4	5	6	7	8
9	10	11	12	13	14	15
16	17	18	19	20	21	22
23	24	25	26	27	28	29
						30

### JANUARY

S	M	T	W	T	F	S
						1 2 3
4	5	6	7	8	9	10
11	12	13	14	15	16	17
18	19	20	21	22	23	24
25	26	27	28	29	30	31

# DECEMBER 2025

Sunday	Monday	Tuesday	Wednesday	Thursday	Friday	Saturday
30	1	2	3	4	5	6
7	8	9	10	11	12	13
14	15	16	17	18	19	20
21	22	23	24	25	26	27
28	29	30	31	1	2	3



A Legacy of Caring, a Passion for Excellence

**Yale Pathology**  **Labs**

**Toll Free 877-YALE-LAB**

**Fax 203-737-4301**

**Email: [yalepathologylabs@yale.edu](mailto:yalepathologylabs@yale.edu)**

**[yalepathologylabs.org](http://yalepathologylabs.org)**

Copyright ©2025 Yale Pathology.

All rights reserved.

No part of this publication may be reproduced or transmitted in any form without including the prior acknowledgement of the Department of Pathology, Yale School of Medicine.